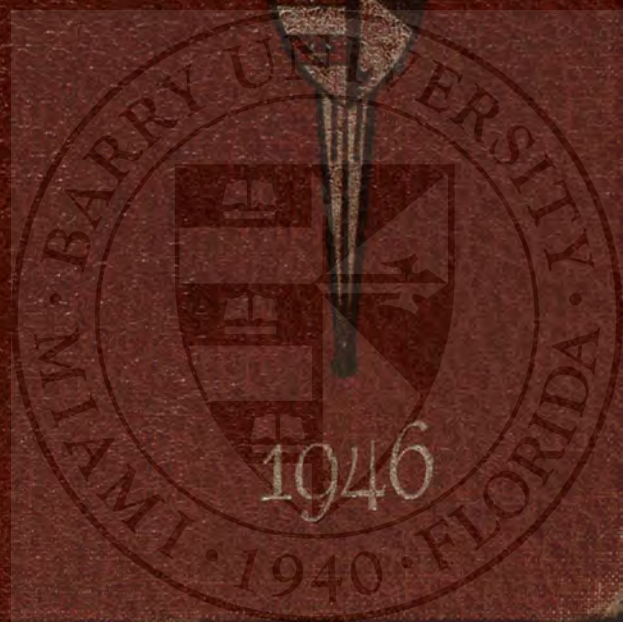


TORCH and SHIELD





E X L I B R I S



Torch and Shield

Barry College Library
Miami, Florida

BARRY COLLEGE

MIAMI, FLORIDA

1946







*Men have marshalled shining words,
Gracious terms and fair,
To link her name with loveliness
Each time they kneel in prayer.*

*Tower of Ivory; House of Gold,
Star of early Morn,
Splendidly they sing the Maid,
The Rose without a thorn.*

*But we who lived through heartbreak
To see the battles cease . . .
O, best beloved title,
We hail her "Queen of Peace!"*

OUR LADY,



Ref
LD
331
.B6635
T6

93555



Rev. Cyril W. Burke, O.P.

FOR FIVE of the six years that Barry has been in existence, Father Burke has been an integral part of the campus.

Hundreds of us have sat in his classrooms, taken his famous tests (we were always sure of the first two questions—"Define" and "Divide"!), listened to the praises of Clinton, Mass., fought the battle of intellect vs. will, and come to know Father as a wise philosopher, an understanding counselor and a true friend.

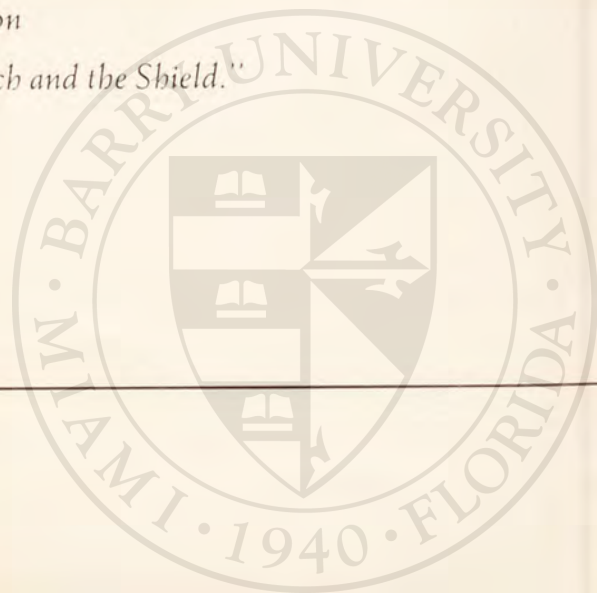
Our recollections of him will remain among our brightest memories of Barry. In his own words we seniors say to Father, "Goodbye, my friend."

QUEEN OF PEACE





*"... Christ's cause is won
By the youth of the Torch and the Shield."*



Contents

	PAGE
ADMINISTRATION AND FACULTY	8
SENIORS	10
UNDERCLASSMEN	20
ACTIVITIES	38
PATRONS AND ADVERTISERS	70



Presenting . . .



Mother Mary Gerald, O.P.



Sister Mary Gonzaga, O.P.

ADMINISTRATION

Reverend Mother M. Gerald, O.P. . . . *President*

Sister M. Gonzaga, O.P. . . . *Vice President and
Business Manager*

Sister M. de Lellis, O.P. . . . *Dean-Registrar*

Sister M. Dorothy, O.P. . . . *Associate Dean and
Department of Education*

Sister Francis Clare, O.P. . . . *Treasurer and
Department of Secretarial Science*

Sister Michael James, O.P. *Librarian*

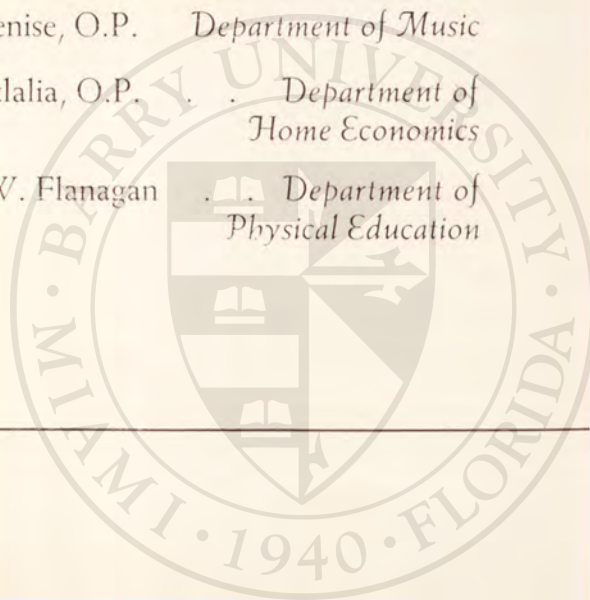
Sister Agnes Cecile, O.P. . . . *Department of
Classical Languages*

The Reverend Cyril W. Burke, O.P. *Department
of Religion and Philosophy*

Sister Mary Denise, O.P. *Department of Music*

Sister Mary Eulalia, O.P. . . . *Department of
Home Economics*

Miss Marian W. Flanagan . . . *Department of
Physical Education*



AND FACULTY

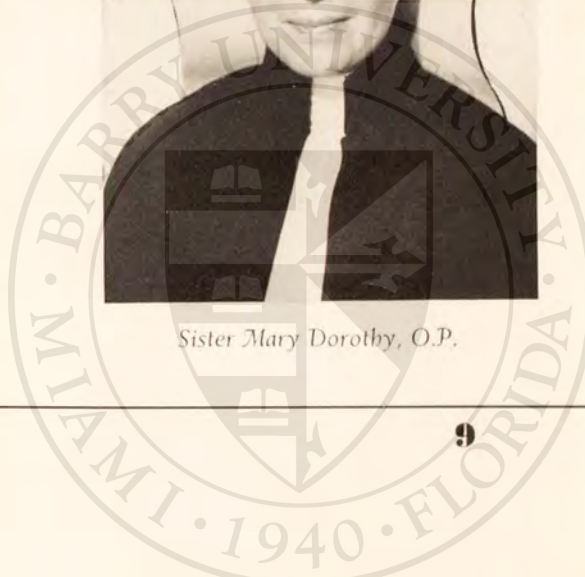
- Mrs. Jeannette Gommo Department of
Secretarial Science
- Sister Jean Marie, O.P. Department of
Romance Languages
- Sister Mary Joannes, O.P. . . Department of Art
- Sister Mary Loyola, O.P. . . . Department of
Social Sciences
- Sister Marie, O.P. Department of
Social Sciences
- Sister Mary Jane, O.P. Department of
Natural Sciences
- Sister Mary Jean, O.P. Department of
Romance Languages
- Sister Mary Paul, O.P. Department of English
- Sister Rita Cecile, O.P. Department of
Mathematics
- Sister Rose Therese, O.P. . . . Department of Music
- Sister Thomas Mary, O.P. . . . Department of
Natural Sciences
- Mr. John Thompson Department of
Secretarial Science
- Sister Mary Xavier, O.P. Department of English



Sister Mary de Lellis, O.P.



Sister Mary Dorothy, O.P.



The Seniors

*And now we leave thee, dearly loved,
For far adventuring
With prayer at dawn and chimes at dusk
For our remembering.*

*With knowledge learned of thee, we go
Strong armored for the fight,
High valor as our burnished shield
Truth as our torch's light.*

*And as we part from thee to seek
The far horizon's gleam,
We bear, beloved, in our hearts
Thy torch, thy shield, thy dream.*



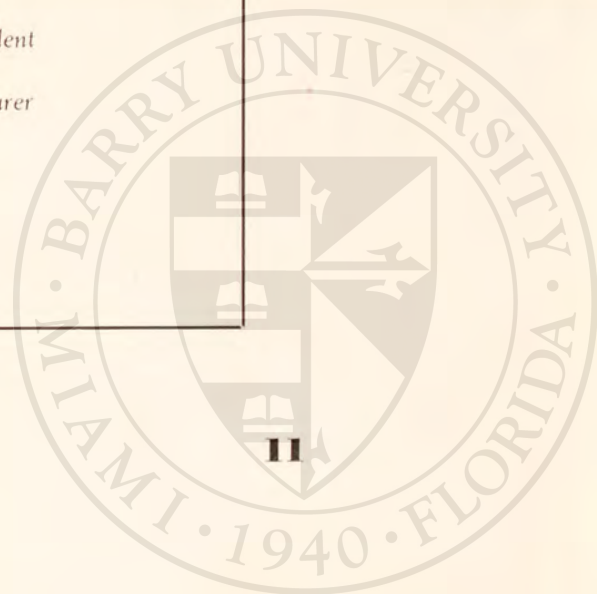


Senior Class Officers

PATRICIA O'KEEFE *President*

FRANCES MUNROE *Vice-President*

PATRICIA DOWNEY *Secretary-Treasurer*





MARGUERITE BRANSFIELD

Chicago, Illinois • *Bachelor of Philosophy* • Social Studies Major • Transfer from Rosemont College, Philadelphia • Junior Year: Member, Cor Jesu Choir • Senior Year: Chairman, publicity committee; Member, Tennis club, Modern Book club.

VIRGINIA LORRAINE BREIT

Evanston, Illinois • *Bachelor of Philosophy* • English Major • Transfer from Rosemont College, Philadelphia • Junior Year: Class treasurer; Athletic emblem; Member, Spanish club, Illinois club • Senior Year: President, Athletic Association; Vice-

president, Tennis club; President, Illinois club; Secretary, Study club; Member, Modern Book club; Teachers' club.

ELIZABETH IGOE CONDON

Charleston, South Carolina • *Bachelor of Arts* • Social Studies Major • Freshman Year: Member, Cor Jesu Choir; Tara Singers • Sophomore Year: Member, Beta Kappa Kappa; Dominican Tertiaries; Cor Jesu Choir; Tara Singers • Junior Year: Member, Teachers' club; Beta Kappa Kappa; House Council; Dominican Tertiaries • Senior Year: Member, Cor Jesu Choir; Tara Singers; Beta Kappa Kappa; Dominican Tertiaries.





PATRICIA DOWNEY

Bellwood, Illinois • *Bachelor of Science* • Home Economics Major • Freshman Year: Member, Cor Jesu Choir; Tara Singers • Sophomore Year: Member, Cor Jesu Choir; Tara Singers; Dominican Tertiaries; Teachers' club; Athletic emblem • Junior Year: Class secretary; Secretary, Albertus Magnus Science club; Novice Mistress, Dominican Tertiaries; Candidate, Delta Epsilon Sigma; Vice-president, Tara Singers; Member, Cor Jesu Choir. • Senior Year: Class secretary-treasurer; Vice-president, Albertus Magnus Science club; Novice Mistress, Dominican Tertiaries; Member, Delta Epsilon Sigma.

EULA ELLIS

Chattanooga, Tennessee • *Bachelor of Arts* • English Major • Transfer from Mount St. Joseph-on-the-Ohio • Junior Year: Member, Our Lady's Sodality • Senior Year: Member, Modern Book club; Beta Kappa Kappa.

JO ANN FEHRENBACHER

Joliet, Illinois • *Bachelor of Science* • Biology Major • Junior Year: Member, Albertus Magnus Science club; Illinois club; Athletic association; Athletic emblem • Senior Year: President, Albertus Magnus Science club; Co-chairman, Our Lady's-Eucharistic committee; Chairman, House Council; Member, Student Council; Illinois club.





MARY LOUISE FINN

St. Petersburg, Florida • *Bachelor of Philosophy* • English Major • Transfer from St. Petersburg Junior College, St. Petersburg • Junior Year: Member, Spanish club; Teachers' club • Senior Year: Chairman, Modern Book club; Member, Study club; Teachers' club.

Junior Year: Consul, Beta Kappa Kappa; Member, Cor Jesu Choir; Tara Singers; *Angelicus* staff; Teachers' club • Senior Year: Co-secretary, Teachers' club; Member, Modern Book club; *Torch and Shield* staff.

ANN MARIE GRIMSHAWE

Miami, Florida • *Bachelor of Arts* • English Major • Freshman Year: Athletic emblem; Member, Beta Kappa Kappa • Sophomore Year: Member, Teachers' club; Beta Kappa Kappa; *Angelicus* staff •

EDITH JOAN HANNON

Erie, Pennsylvania • *Bachelor of Philosophy* • Social Studies Major • Transfer from Villa Maria College, Erie • Junior Year: Co-secretary, Teachers' club; Member, Cor Jesu Choir; Tara Singers • Senior Year: Vice-chairman, Teachers' club; Member, Cor Jesu Choir; Tara Singers.





MARILYN KOKENGE

Miami, Florida • *Bachelor of Philosophy* • French Major • Freshman Year: Member, Tara Singers; Cor Jesu Choir • Junior Year: Member, Tara Singers; Cor Jesu Choir • Senior Year: Member, Modern Book club; Mistress of ceremonies, Campus Queen coronation.

Sophomore Year: Class social chairman; Member, Albertus Magnus Science club; Cor Jesu Choir; Tara Singers; Teachers' club • Junior Year: Member, Albertus Magnus Science club • Senior Year: Member, Albertus Magnus Science club; Cor Jesu choir; Tara Singers.

GERALDINE KUNZ

Harrisburg, Pennsylvania • *Bachelor of Science* • Home Economics Major • Freshman Year: Secretary, Tara Singers; Member, Cor Jesu choir •

ELEANOR ANNETTE LOCKWOOD

St. Davids, Pennsylvania • *Bachelor of Philosophy* • Music Major • Transfer from Immaculata College, Immaculata, Pennsylvania • Senior Year: Member, Cor Jesu Choir; Tara Singers.





PATRICIA MARGARET MACGILL

Miami, Florida • Bachelor of Arts • English Major • Freshman Year: Secretary, Art club; Member, Albertus Magnus science club, Dominican Tertiaries • Sophomore Year: Editor, *Torch and Shield*, Member, Beta Kappa Kappa; *Angelicus* staff • Junior Year: Prioress, Dominican Tertiaries; Editor, *Torch and Shield*, Editor, *Angelicus*, Candidate, Delta Epsilon Sigma; Member, Student Council • Senior Year: Prioress, Dominican Tertiaries; Campus Queen; *Who's Who in American Universities and Colleges*, Editor, *Torch and Shield*, Assistant Editor, *Angelicus*, Member, Kappa Gamma Pi; Student Council.

Major • Freshman Year: Member, Tara Singers; Cor Jesu Choir • Sophomore Year: Athletic emblem; Member, Albertus Magnus Science club • Junior Year: Class vice-president; President, Albertus Magnus Science club; Candidate, Delta Epsilon Sigma; Member, Tara Singers, Cor Jesu Choir • Senior Year: Sodality prefect; Chairman, Student Council; Class vice-president; *Who's Who in American Universities and Colleges*, Member, Kappa Gamma Pi; Tara Singers; Cor Jesu Choir; Albertus Magnus Science club; Dominican Tertiaries.

FRANCES CECILE MUNROE

Miami, Florida • Bachelor of Science • Biology

PATRICIA ANN O'KEEFE

Grosse Pointe, Michigan • Bachelor of Philosophy • English Major • Transfer from Michigan State Normal College, Ypsilanti, Michigan • Sophomore Year: Member, Spanish club; Teachers' club;





Athletic association • Junior Year: Class President; President, Michigan club; Athletic emblem; Member, Teachers' club; Athletic Association; Student Council • Senior Year: Class President; President, Michigan club; Member, Modern Book club; Teachers' club; Vice-chairman, Student Council.

ANNE ELIZABETH PARKS

Atlanta, Georgia • *Bachelor of Philosophy* • English Major • Transfer from Chestnut Hill College, Philadelphia • Junior Year: Class social chairman; Member, Cor Jesu Choir; Tara Singers • Senior Year: Vice-chairman, Regina Pacis House Committee; Treasurer, Study club; Member, Modern Book club; Delta Epsilon Sigma.

CARMEN MARIA RAMIREZ

Cabo Rojo, Puerto Rico • *Bachelor of Philosophy* • Biology Major • Transfer from Marymount College, Tarrytown, New York • Junior Year: Social chairman, Spanish club; Member, Albertus Magnus Science club • Senior Year: Secretary, House Council; Member, Student Council; Albertus Magnus Science club; Spanish club.

MARY LORRAINE RUSSELL

Tiskilwa, Illinois • *Bachelor of Philosophy* • Education Major • Transfer from Rosary College, River Forest, Illinois • Junior Year: Member, Teachers' club • Senior Year: Chairman, Teachers' club; Member, Barry Little Symphony; Modern Book club.





MARY JANE WARD

Miami Beach, Florida • Bachelor of Arts • English Major • Freshman Year: Chairman, Catholic Truth Committee; Member, Beta Kappa Kappa • Sophomore Year: Member, Beta Kappa Kappa • Junior Year: Candidate, Delta Epsilon Sigma • Senior Year: Co-secretary, Teachers' club; Who's Who in American Universities and Colleges; Member, Modern Book club; Delta Epsilon Sigma.

Year: Member, Tara Singers; Cor Jesu Choir • Sophomore Year: Member, Teachers' club • Junior Year: Member, Albertus Magnus Science club; Beta Kappa Kappa • Senior Year: Member, Albertus Magnus Science club; Dominican Tertiaries; Cor Jesu Choir; Tara Singers.

CARLEEN HOFFMAN POPE

Miami, Florida • Candidate for Degree of Bachelor of Science • Home Economics Major • Freshman

Miami Beach, Florida • Candidate for Degree of Bachelor of Philosophy • English Major • Junior Year: Secretary, Eucharistic committee • Senior Year: Chairman, Our Lady's-Eucharistic committee.



“When we were very young”



The pioneer group of 1940—just twelve Barryites!

“Now we are six”



Look at us now!



Underclassmen

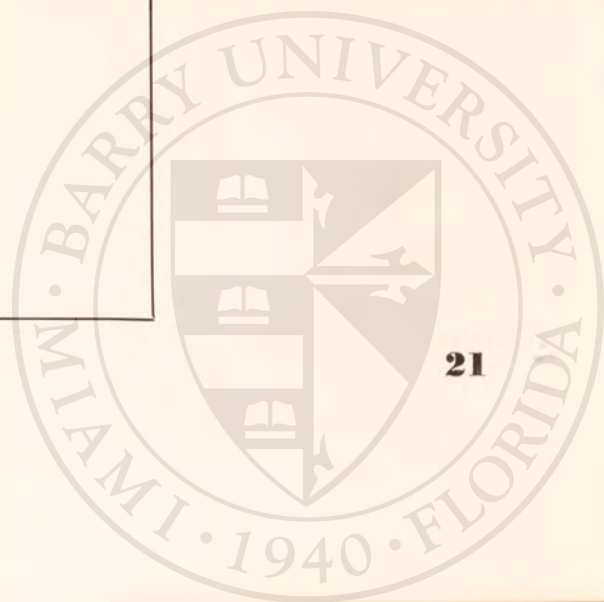
O Queen who had the world for throne
And all the stars for crown
Yet walked in meek humility
The streets of Nazareth town,

O Queen who knew thyself to be
Thrice blessed, thrice adored,
Yet called thyself with simple grace
The handmaid of the Lord,

O Queen who knew cruel Roman wrath
And sorrow past surcease,
Yet went with valor all thy days
The gentle paths of peace;

Guide us, teach us, help us find
The pathways known to thee,
That we may go with humble hearts
To gain our victory.







Junior Class Officers

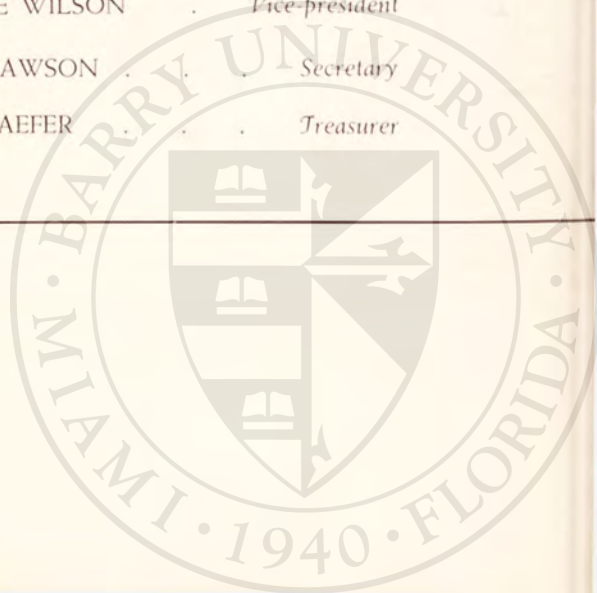
(LEFT TO RIGHT)

LA VERNE MURPHY *President*

ROSE MARIE WILSON *Vice-president*

ISABELLE DAWSON *Secretary*

GRACE SCHAEFER *Treasurer*

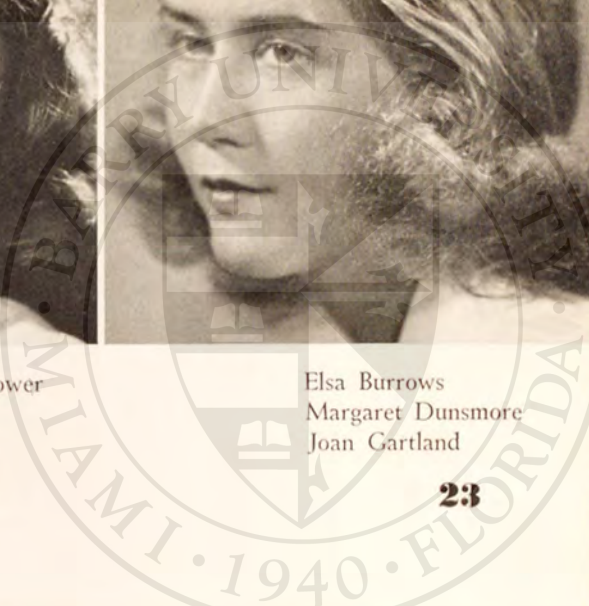




Janet Athy
Pauline Camara
Mary Dwyer

Marjory Ann Bernower
Isabelle Dawson
Patricia Flaherty

Elsa Burrows
Margaret Dunsmore
Joan Gartland

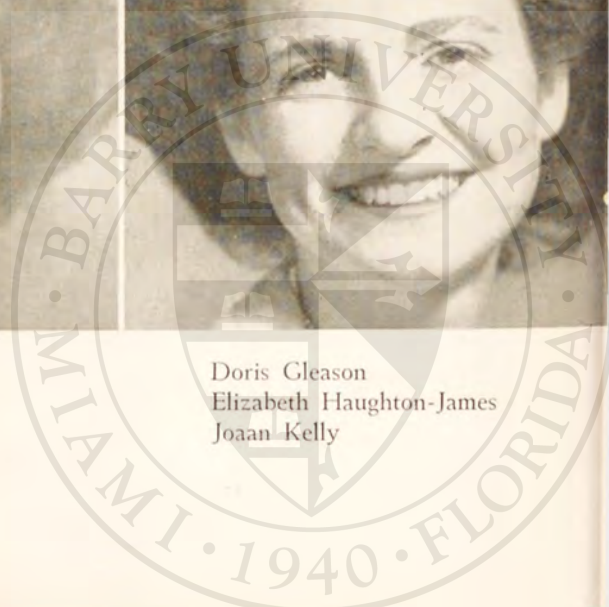




Colleen Gillen
Phyllis Gray
Corinne Herschling

Constance Gillig
Doris Hart
Florence Hodde

Doris Gleason
Elizabeth Haughton-James
Joan Kelly

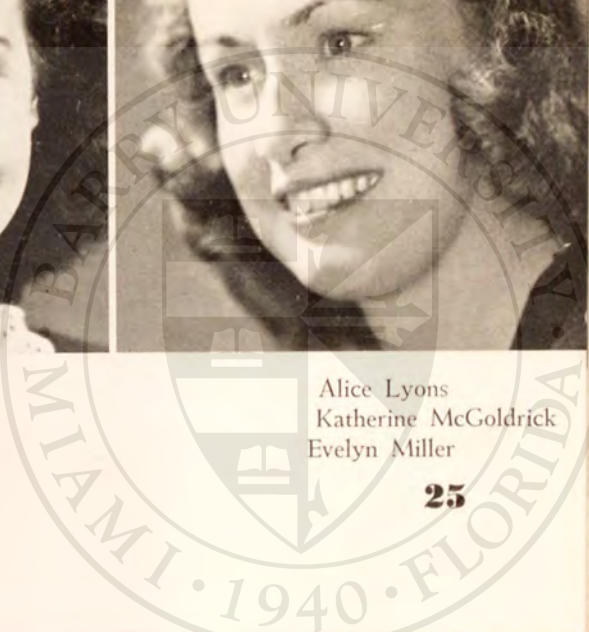




Therese Koehnemann
Claire McCullough
Eileen Meyers

Anna Kolia
Barbara McHugh
Lily Militello

Alice Lyons
Katherine McGoldrick
Evelyn Miller



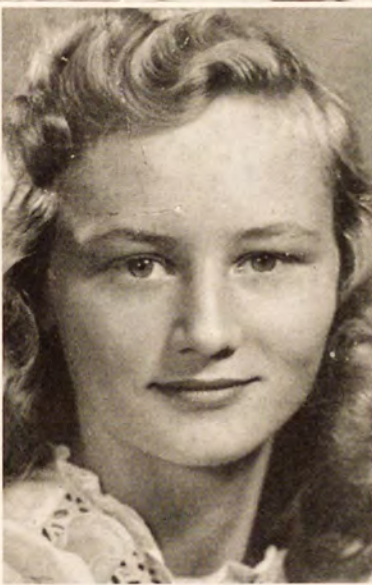


Margaret Monckton
Shirley Rees
Dolores Schorsch

LaVerne Murphy
Grace Schaefer
Marian Schuster

Loretta Muszynski
Janith Schaefer
Eleanore Soulliere





Barbara Streckfus

Jean Travnikar

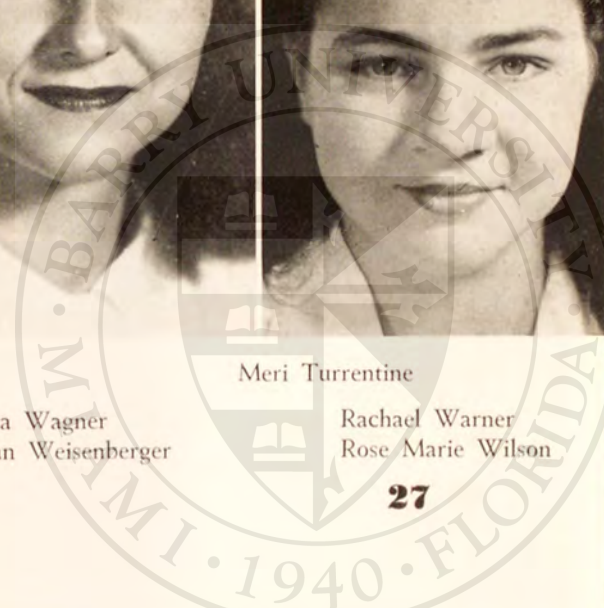
Meri Turrentine

Marion Vaccaro
Joyce Weed

Cwendolyn Volckening
Muriel Welsh

Rita Wagner
Joan Weisenberger

Rachael Warner
Rose Marie Wilson

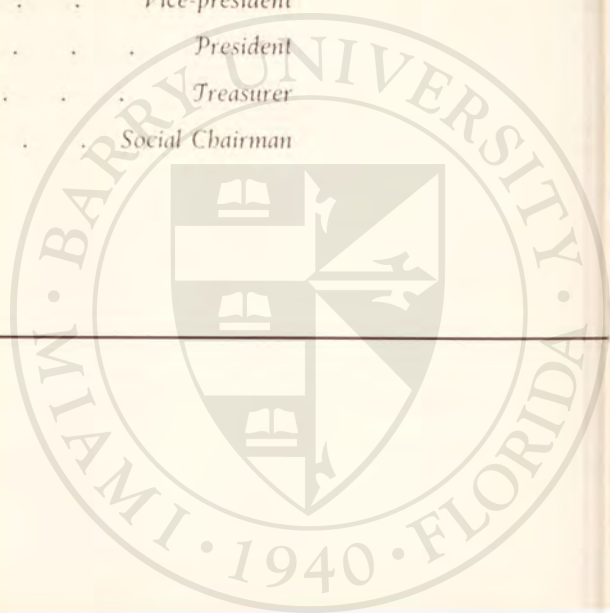




Sophomore Class Officers

(LEFT TO RIGHT)

JANE DEXTER	Secretary
JEANNE LILLY	Vice-president
JUSTINE OLSON	President
BETTY HECK	Treasurer
MARTHA SCHEFFER	Social Chairman



Louise Anhut
Mary Ankenbrock
Laura Arango
Gloria Boyle



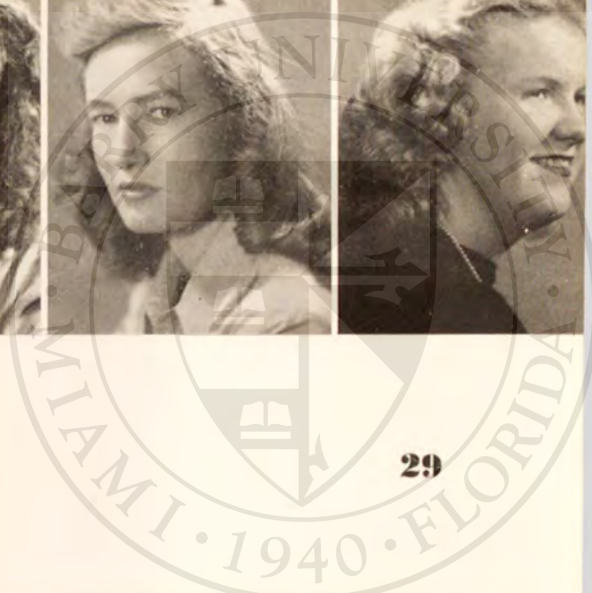
Carol Ann Brady
Marylin Bursick
Georgia Cain
Barbara Cameron



Geraldine Condon
Margery Cross
Mary Jo Curtis
Rosemary Davis



Jane Dexter
Irene Droughton
Catherine Ficks
Patricia Freeman





Ann McDonald
 Mary Ann Maher
 Mary Mahoney
 Mary Jane Matthews



Elaine Miller
 Marianne Moesta
 Nora Neuman
 Rita O'Flaherty



Justine Olson
 Ann Omara
 Patricia Organ
 Helen Jane Perez



Felicia Parkinson
 Jean Pastor
 Patricia Perry
 Mary Lou Petersen



Katherine Gallagher
Therese Gits
Joan Haberkorn
Barbara Hannon



Betty Heck
Irene Hurtak
Yolanda Imbert
San Jernigan

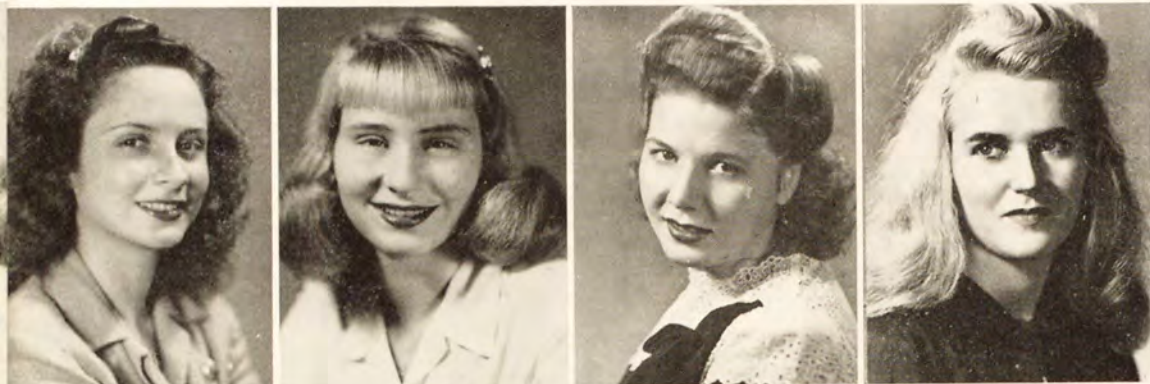


Jane Kearns
Patricia Koenig
Mary Lanczki
Barbara Lane



Mary Edith Lautner
Jeanne Lilly
Mary Lou Lomaistro
Jacqueline Lucas





Ella Pintado
Patricia Quinn
Cecilia Reynes
Mary Ann Ripton



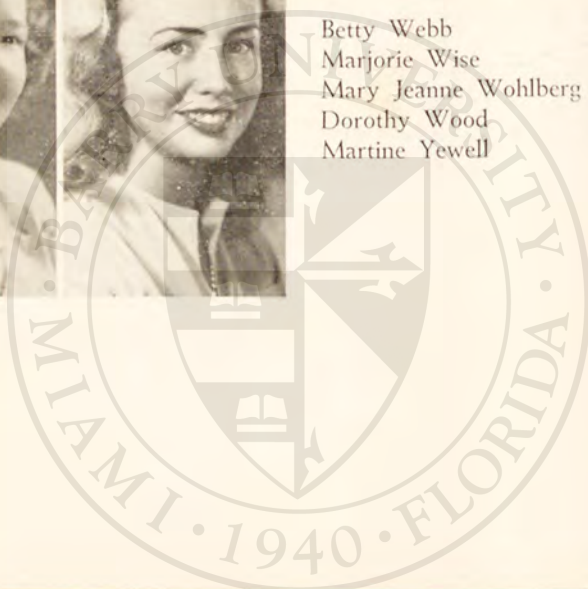
Marion Roberts
Shirley Rodriguez
Martha Scheffer
Encida Sedda



Mary Shannon
Lucille Steiner
Barbara Thompson
Eileen Walton



Betty Webb
Marjorie Wise
Mary Jeanne Wohlberg
Dorothy Wood
Martine Yewell

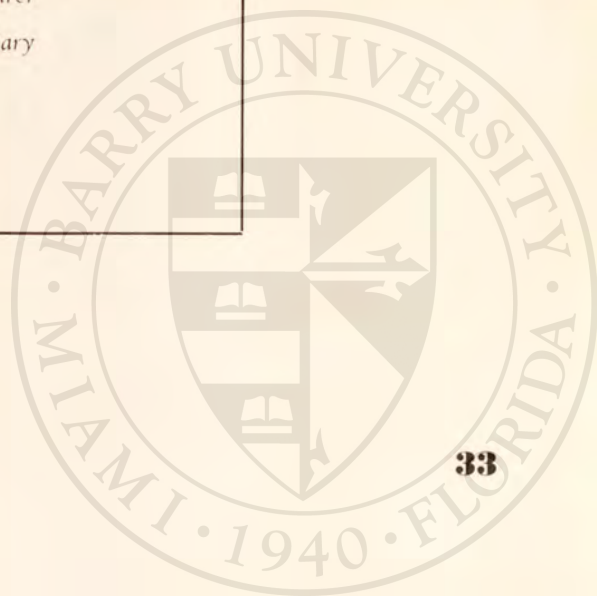




Freshman Class Officers

(LEFT TO RIGHT)

GERALDINE MUDD	. . .	<i>President</i>
JOAN KUNTZ	. . .	<i>Vice-president</i>
JEANNE MUNGER	. . .	<i>Social Chairman</i>
JACQUELINE CHISHOLM	. . .	<i>Treasurer</i>
THERESE WALTON	. . .	<i>Secretary</i>





Alberta Jean Adams
 Julia Ahlman
 Dorothy Lee Allen
 Teresita Arosemena
 Mary Ann Berghoff



Frances Borowicz
 Parmelia Bourne
 Irene Brennan
 Mary Dorothy Brien
 Jean Burr



Gloria Carbone
 Cecile Catanzaro
 Jacqueline Chisholm
 Consuela Cobo
 Margot Colon



Nilda Colorado
 Marilyn Convery
 Anne Criado
 Collette Currier
 Vivian Decker



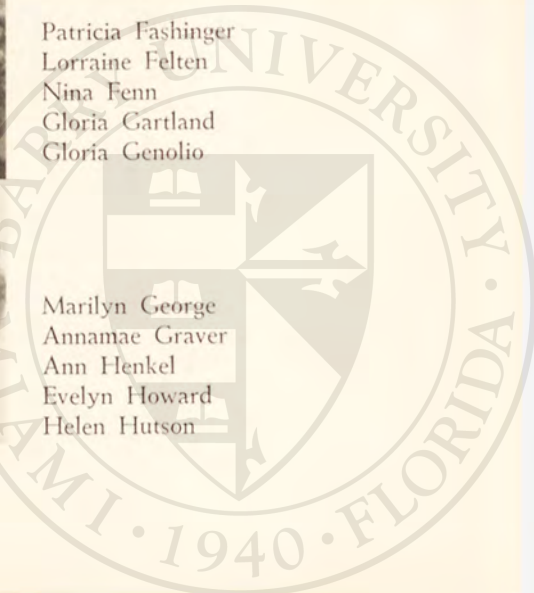
Mary Ellen DeDominicis
 Patricia Donnelly
 Mary Catherine Dreka
 Catherine Duane
 Elizabeth Dunsmore



Patricia Fashing
 Lorraine Felten
 Nina Fenn
 Gloria Gartland
 Gloria Genolio



Marilyn George
 Annamae Graver
 Ann Henkel
 Evelyn Howard
 Helen Hutson



Geraldine Jones
 Daisy Kay
 Helen Kelley
 Mary Louise Kelley
 Christina Kelly



Patricia Kelly
 Rita Keough
 Josefa Kunert
 Betty Jo Kuntz
 Joan Kuntz



Lorraine LaFontaine
 Mary Latour
 Kathleen Lawrence
 Joan Layden
 Kathryn Leander



Dorothy Lex
 Virginia Liddy
 Marjorie Loeffler
 Adelia McInarnay
 Claire Meyer



Mary Jane Mills
 Elena Morales
 Ninnian Morris
 June Muckerman
 Geraldine Mudd



Jeanne Munger
 Mary Rose O'Hara
 Geraldine Oswald
 Kathleen Park
 Bettye Perry



Sue Perry
 Hope Portocarrero
 Gisela Posada
 Mary Lou Ragen
 Alma Ramirez



Clara Raymond
 Marilyn Rees
 Mary Elizabeth Reilly
 Virginia Reynolds
 Jewel Royal



Paula Sais
 Betty Jo Saunders
 Patricia Savage
 Mary Louise Schmitz
 Rosemarie Schollmeyer



Marjorie Schwarzenbart
 Agnes Seifert
 Carmen Senghaas
 Patricia Sheeler
 Charlotte Smith



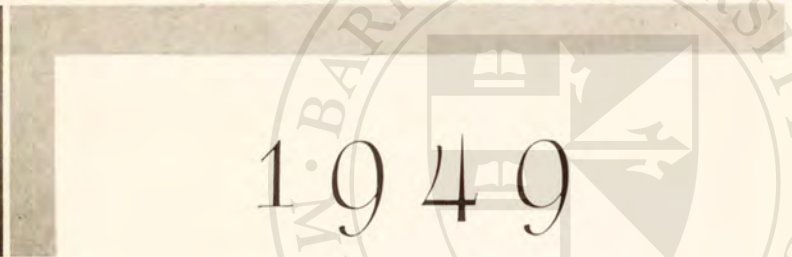
Dorothy Squires
 Mary Agnes Strahle
 Lola Thacker
 Florence Thomas
 Betty Totz

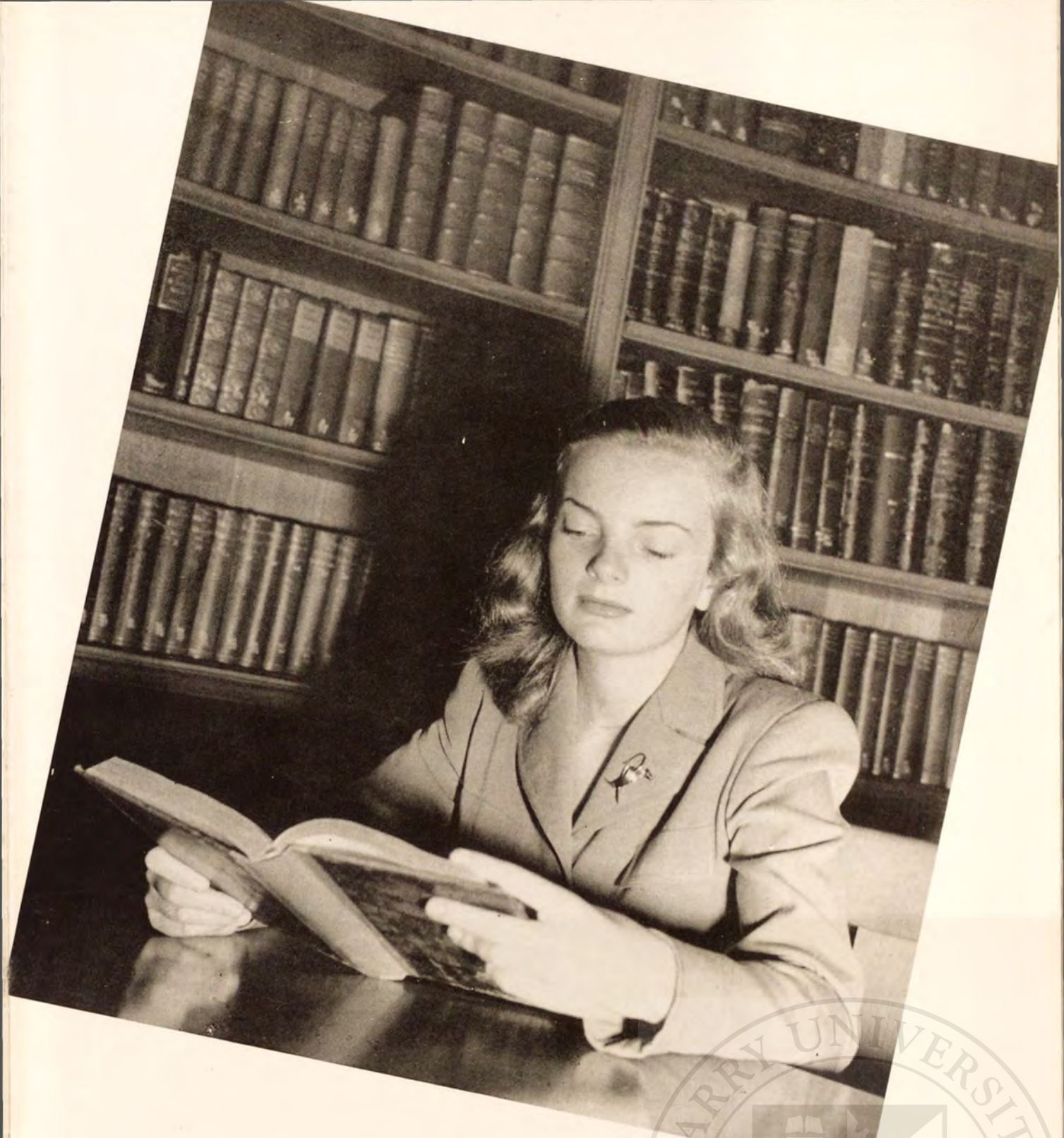


Analida Vallarino
 Lucia Vallejo
 Eleanor Vogt
 Therese Walton
 Joan Weed



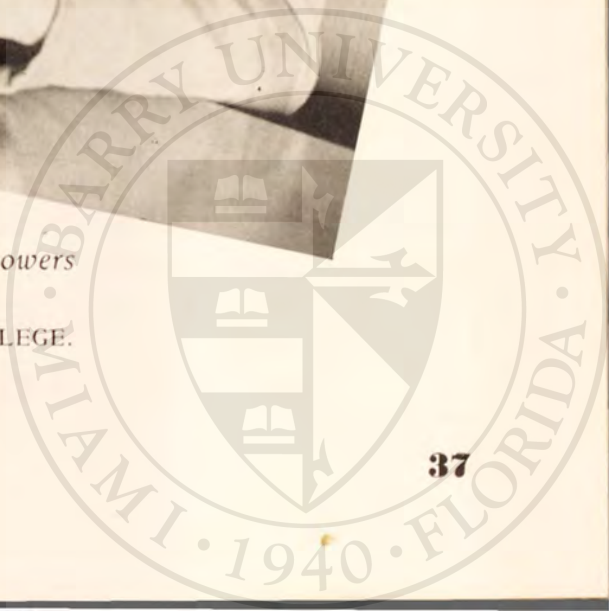
Jacqueline Ward





*"To develop to the fullest extent the intellectual powers
of the young women committed to its care."*

FROM THE GENERAL AIMS OF THE COLLEGE.



Activities

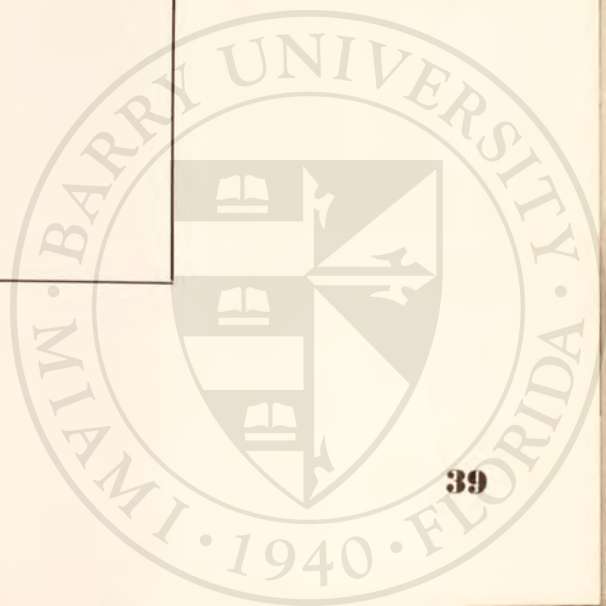


*O, thou who watched a little Lad
On golden hillsides run,
Look tenderly upon this place
Beloved of flowers and sun.*

*O, thou who watched His playmates come
To greet the Holy Child,
Look down and bless our comradeship,
And smile as once thou smiled.*

*And as thy heart was brave beneath
The Cross He had to carry
Make strong thy daughters' hands to bear
The Torch and Shield of Barry.*







The Sodality of the Blessed Virgin Mary

THE SODALITY is the most important organization on the Barry campus. Nearly every school activity is under its sponsorship. Officers of the sodality for 1945-1946 include:

Prefect Frances Munroe
Vice-Prefect Rachael Warner
Secretary Doris Gleason
Treasurer Jane Dexter

Committee chairman are:

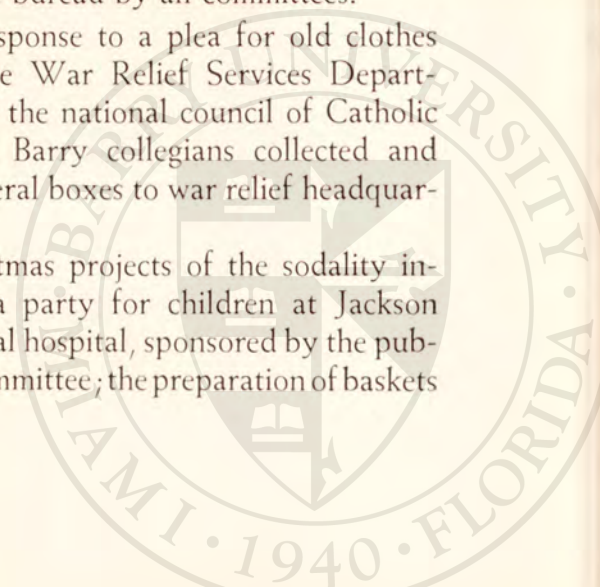
Social Life Jean Travnikar
Publicity Marguerite Bransfield
Catholic Truth Florence Hodde
Mission LaVerne Murphy
Our Lady's- Eucharistic . . . Carlene Pope
 and Jo Ann Fehrenbacher

During the school year the sodality sponsored several tag days through the

mission committee for the benefit of foreign and home missions. Our Lady's-Eucharistic committee planned the Living Rosary, held in Cor Jesu chapel October 31. Thanksgiving baskets were donated to needy families through the Catholic Welfare bureau by all committees.

In response to a plea for old clothes from the War Relief Services Department of the national council of Catholic women, Barry collegians collected and sent several boxes to war relief headquarters.

Christmas projects of the sodality included a party for children at Jackson Memorial hospital, sponsored by the publicity committee; the preparation of baskets



for needy families by the social life committee; selling of Christmas seals; a party for the children at St. Joseph's home sponsored by the Catholic truth committee; cash contributions to the Dominican missions in West Palm Beach and Fort Pierce from the mission committee; and the preparation of gifts for the negro mission in Ft. Pierce by Our Lady's-Eucharistic committee.

Under the auspices of the social life committee and in co-operation with various campus clubs and classes four major dances were enjoyed during the year, climaxed by the senior prom in May with Jean Travnkar chosen by student election as Barry's first prom queen.

Forty Hours' Devotion, a novena in honor of the Immaculate Conception, and a triduum for the intentions of the Holy Father, were included among spiritual activities of sodalists, sponsored by Our Lady's-Eucharistic committee.

A gift from the entire sodality was the \$200 presented to Mother Mary Gerald, College President, on the occasion of her annual visit to the campus. The gift was for the benefit of the new Dominican mission in Ciudad Trujillo, Dominican Republic.

Other all-Sodality activities included the students' spiritual retreat, with Rev. Louis O'Leary, O.P., as retreat master; Catholic Book Week and the May Crowning with Frances Munroe crowning the statue of Our Lady in Cor Jesu chapel.



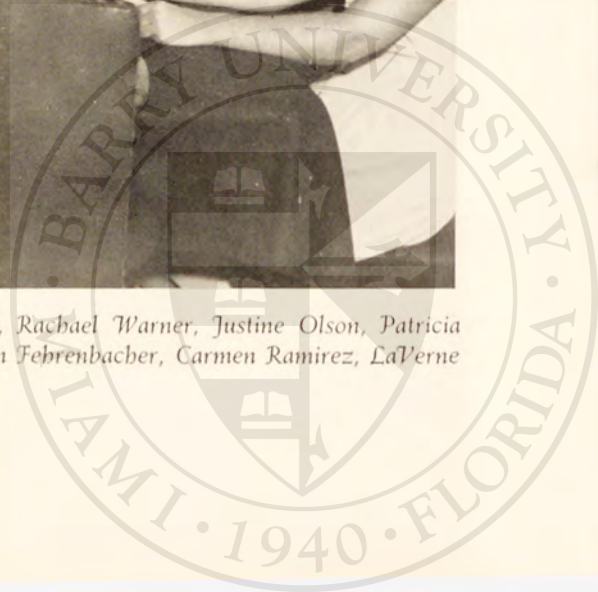


FRANCES MUNROE, chairman of the Student Council.

Student Council

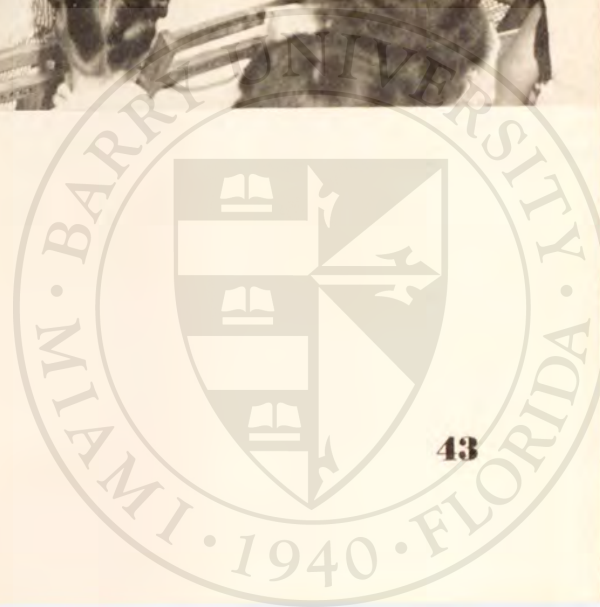


The Student Council in session. Left to right: Patricia O'Keefe, Rachael Warner, Justine Olson, Patricia MacGill, Doris Gleason, Geraldine Mudd, Virginia Breit, Jo Ann Fehrenbacher, Carmen Ramirez, LaVerne Murphy, Frances Munroe.



THE STUDENT COUNCIL

. . . is an organization of student leaders which co-ordinates the activities of all campus groups . . . 1946 projects included . . . the monthly Council Bulletin . . . the very popular Question Box . . . Monday night community singing . . . monthly birthday parties . . . The Council stressed correct parliamentary usage in all college organizations . . . During second semester it voted that class vice presidents should be admitted to Council membership . . . so Rose Marie Wilson, Jeanne Lilly and Joan Kuntz became members . . . The Student Council was formally installed October 12 . . . members signed a pledge of loyalty . . . and explained to the student body the ideals of the Student Council and the necessity of student co-operation to ensure its success . . . During the year Frances Munroe officiated as chairman of the Council . . . Patricia O'Keefe was vice-chairman . . . and LaVerne Murphy second vice-chairman . . . Rachael Warner was secretary . . . Faculty members of the Council were Sister M. de Lellis, dean, and Sister Mary Dorothy, house council advisor . . .





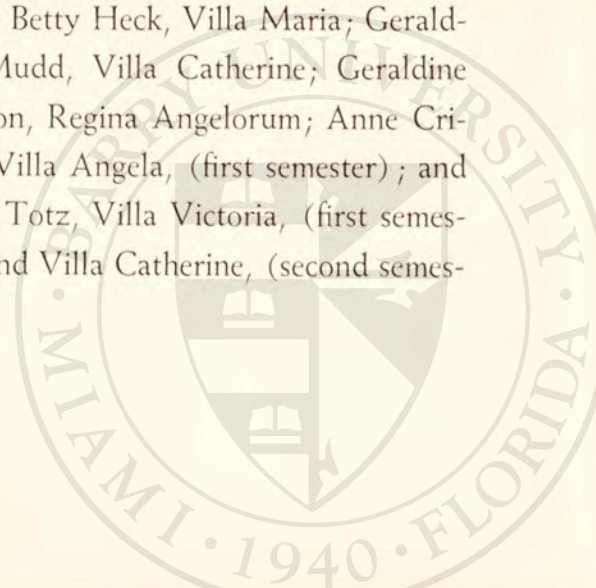
The House Council

THE PURPOSES of the house council include providing opportunity for cooperative handling of residence hall problems by students and faculty; and cooperation with the Student Council to bring about a clear understanding of college policy, and promotion of amicable relationships between students and faculty members.

Accomplishments of the 1945-1946 school year include discussion and solution of many residence hall problems; sponsorship of a committee to plan Friday evening entertainments for on-campus students; publication of a student directory; and sponsorship of house Christmas parties.

Jo Ann Fehrenbacher, Rosa Mystica, is the chairman of the house council; Doris Gleason, Maris Stella, is vice-chairman; and Carmen Ramirez, Regina Pacis West, is secretary. By virtue of their offices these three students also hold membership on the Student Council.

The other members of the council include Geraldine Jones, representing Regina Pacis South; Therese Gits, Villa Rosa; Betty Heck, Villa Maria; Geraldine Mudd, Villa Catherine; Geraldine Condon, Regina Angelorum; Anne Criado, Villa Angela, (first semester); and Betty Totz, Villa Victoria, (first semester) and Villa Catherine, (second semester).



CAMPUS QUEEN

“THAT HIGHEST DIGNITY is open to you if you will accept the highest dignity . . . Queens you must always be; queens to your lovers, queens to your husbands and sons; queens of higher mystery to the world beyond, which bows itself and will forever bow before the myrtle crown and the stainless sceptre of womanhood.”

The students of Barry found those qualities in Patricia MacGill, their campus queen for 1945-46. No one quite like her . . . in poise, sincerity, intelligence and loyalty . . . no one held so dear by quite so many . . . without conscious effort, she rose to our campus throne because of an ever so generous, dependable and gracious character. The fulfillment of any real Barryite's dream . . . to be acknowledged as “top notch” girl by all . . . to every girl a true friend, model and queen.



Albertus Magnus

THE BARRY SCIENCE CLUB was named by its charter members in honor of Albert the Great.

The officers for the year 1945-46 include:

Jo Ann Fehrenbacher, *President*; Patricia Downey, *Vice-president*; Joyce Weed, *Secretary*; Rose Marie Wilson, *Treasurer*.

Activities for the year included a Science Exhibit; a \$100 war bond raffle to raise money for a 16 millimeter movie projector to be presented to the College; and a Valentine's Day card party, highlighted by the raffling of "Miss Greenback," a doll dressed in dollar bills.

Santa Rosa

OUR LATIN-AMERICAN senioritas and all other Barry students interested in the study of Spanish are members of the Santa Rosa club.

Officers include:

Pauline Camara, *President*; Kathleen McGoldrick, *Vice-president*; Florence Hodde, *Secretary-treasurer*.

During the year Santa Rosans attended the meeting of Florida State Spanish teachers held at Andrew Jackson high school, and entertained the group with Spanish songs. Under the direction of Kathleen McGoldrick, members of the club saw Latin-American travelogues throughout the year. At Christmas time Santa Rosans held a traditional Christmas party featuring the *pinata*, beloved of Spanish children. They also staged the *posados*, Advent processions which form part of the Mexican celebration of Christmas.

Pan-American day celebrations on the Barry campus were highlighted by the traditional Solemn High Mass and by the program presented by the Santa Rosans.



Book Club

MARY LOU FINN was responsible for the organization of the Modern Book club in September . . . The group developed from last year's contemporary prose course . . . the students just wanted to keep on going . . . so they formed the club, which meets informally to discuss current books . . . to stimulate interest in reading and to evaluate new books according to moral and literary standards . . . The members took for a project the increasing of the number of recent worth-while fiction books in the College library . . . A unique distinction possessed by the Modern Book club is that it's the only Barry club which has no officers . . .



Alumnae

THE BIG EVENT of the year for the Alumnae association was the raffle it sponsored to raise a scholarship fund for Barry students . . . The alumnae receive news of each other and of campus doings through frequent news letters circulated by Mrs. Jeanette Gomme, '42, alumnae president, and by Audrey Bibeault '43, corresponding secretary . . . The alumnae seek to strengthen ties among graduates . . . to further Catholic education . . . and to spread the influence of the Sisters of St. Dominic . . . The organization now consists of 95 members . . . Sister Michael James is faculty advisor . . . and other officers are Lorraine Miller '45, vice-president, and Eleanor Neary Haub '42, secretary-treasurer . . .



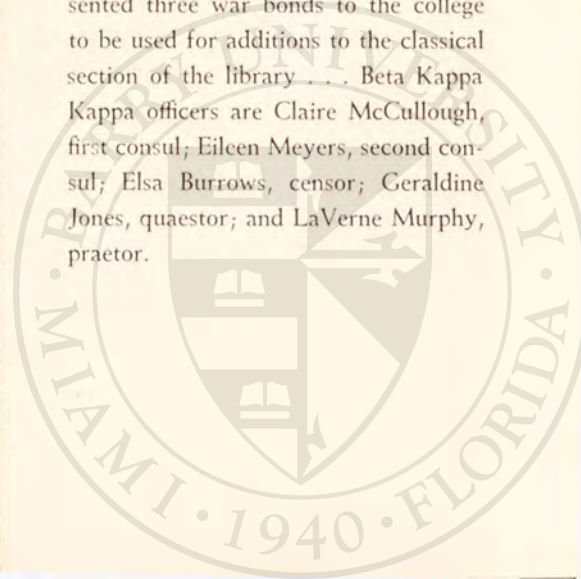
Third Order of St. Dominic

SIXTEEN COLLEGIANS are members of the St. Thomas Aquinas chapter of Dominican Tertiaries . . . high on their list of projects for the year came the "penny-pinching" drive they sponsored for Mercy Hospital under the chairmanship of Betty Condon . . . \$25 in pennies was collected from the student body . . . and \$204.10 was collected in pledges and cash on February 20, Mercy Hospital day on the Barry campus . . . On the spiritual side, Tertiaries listened to a series of discussions at their monthly meetings, dealing with such subjects as "Ourselves as Dominicans," "Our Relations With Others," "Our Attitude Towards Today's Problems," and "Our Fellow-Dominicans" . . . New members of the chapter were received on April 30, feast of St. Catherine of Siena . . . Father Burke directed the chapter . . . student officers were Patricia MacGill, prioress; Jean Travnikar, sub-prioress; Lily Militello, secretary-treasurer.



Beta Kappa Kappa

CLASSICALLY INCLINED BARRYITES are members of Beta Kappa Kappa . . . The group, one of Barry's longest-organized clubs, aims to increase interest and understanding of the heritage of Greece and Rome . . . Activities of the year included . . . papers presented by club members on various aspects of Greek and Roman life . . . Classical Week, held from April 22-26, highlighted by a Roman banquet . . . presentation of "Pyramus and Thisbe" . . . and a display of dolls dressed in Roman costume . . . Members presented three war bonds to the college to be used for additions to the classical section of the library . . . Beta Kappa Kappa officers are Claire McCullough, first consul; Eileen Meyers, second consul; Elsa Burrows, censor; Geraldine Jones, quaestor; and LaVerne Murphy, praetor.



The Secretarial Club

THE PRINCIPAL PROJECT of the year for Barry's budding businesswomen was to discover the opportunities existing in different organizations all over the country for college-trained secretarial students . . . Breakfast meetings were something new under the sun for the Barry campus . . . but the Secretarial members enjoyed their pioneering . . . During the year several club members addressed the group . . . Mary Lou Lomaistro spoke on "The Legal Stenographer;" . . . Eleanor Vogt on "Ghost Writing;" . . . and Carol Ann Brady on "Off to Cairo" . . . Helen Hutson told members about her experiences as an army secretary . . . The club sponsored a movie entitled, "John Gregg Presents Shorthand Champions" . . .

. . . Officers were Marilyn Bursick, chairman; Betty Heck, co-chairman; Isabelle Dawson, secretary-treasurer.

The Teachers' Club

A SURVEY OF FLORIDA COLLEGES was made by the Teachers' club as its 1946 project . . . and the collected data were edited and presented to the Barry library as a reference source . . . In connection with this project members also made a map of Florida, showing the location of each college in the state. . . . Second semester meetings of the Teachers' club were conducted as teachers' meetings and problems and new methods of instruction were discussed . . . Mary Russell, chairman of the club, acted as principal of the imaginary school . . . and the survey of Florida colleges was carried out as a project of the school . . .

. . . Other officers of the group included Edith Hannon, vice-chairman; Ann Grimshawe and Mary Jane Ward, co-secretaries . . .



HONORS

FIVE SENIORS share the honor of membership in two national Catholic honor societies . . . and three of them were selected for the additional recognition of inclusion in *Who's Who Among Students in American Universities and Colleges* . . . Elected by faculty vote to membership in Kappa Gamma Pi were Frances Munroe and Patricia MacGill . . . selected on the basis of scholarship and participation in extra-curricular activities . . .

. . . Also chosen as a result of faculty balloting were three members of Delta Epsilon Sigma . . . Anne Parks, Patricia Downey and Mary Jane Ward . . . Members of Delta Epsilon Sigma are selected on a basis of effective scholarship judged upon grades and the ability to bring Catholic philosophy to bear upon modern problems . . . Mary Jane Ward, Frances Munroe and Patricia MacGill are the three seniors also included in *Who's Who* . . . These choices were also made by faculty vote . . . bases of judgment included character, scholarship, leadership, and potentiality for future usefulness to business and society . . .

. . . Juniors nominated for candidacy to the honor societies in their senior year include Doris Gleason, Rose Marie Wilson, Shirley Rees, Lily Militello, Rachael Warner, Isabelle Dawson, Elsa Burrows and Phyllis Gray . . .



(above) Members of honor societies: Front row: Patricia Downey, and Anne Parks, Delta Epsilon Sigma. Back row: Mary Jane Ward, Delta Epsilon Sigma, Frances Munroe and Patricia MacGill, Kappa Gamma Pi. (below) Filling out WHO'S WHO questionnaires: Left to right, Frances Munroe, Mary Jane Ward, Patricia MacGill.



CAMPUS PUBLICATIONS

PERENNIALY COVERED with printer's ink and pencil smudges are the members of the hard-working Publications Committee, responsible for producing a monthly *Angelicus* and a yearly *Torch and Shield* . . . They're to be identified by a certain wild-eyed gleam, especially around deadline times . . .

. . . Mainly responsible for putting the *Angelicus* to bed every month this year were editors Patricia Organ, Rachael Warner, Doris Gleason, Janet Athy and Patricia MacGill. Isabelle Dawson took care of an evergrowing subscription list; Elaine Miller and Elizabeth Haughton-James shared the circulation headache; and Martha Scheffer was the never-tiring staff photographer . . .

. . . Running all over campus to cover their beats were reporters Marilyn Rees, Marilyn

Convery, Bettye Perry, Florence Hodde, Claire McCullough, Anne Criado, Barbara McHugh, Josefa Kunert, Mary Jane Mills, Betty Webb, Clare Meyers, Jeanne Munger, Jean Travnikar. . . . Plans for a bigger and better '46 *Torch and Shield* began last May as soon as the '45 edition rolled off the presses . . . First semester was occupied with picture taking . . . and second semester was filled with copy writing, proof checking, and weighty consultations with printers, photographers and engravers . . .

Martha Scheffer did just as good a job for the *T&S* in the way of 'round-the-campus snaps as she did for the *Angelicus* . . . Justine Olson will probably never forget her weeks of checking lists and students to be sure that every individual picture was taken and all the proofs properly handled Rose Marie Wilson was

the most relieved person on campus the day she was able to announce that we were over the top financially . . . and Elaine Miller and her corps of ad-getters covered Miami like a blanket . . . for a while we thought she was going to fill the book with nothing but ads . . . Ann Grimshawe uncovered all the histories of all the seniors for our graduation section . . . and Pat MacGill was general editor . . . with twin Chris MacGill, an associate alumnae, responsible for the poems introducing each section of the book . . .

. . . Thanks are due from the Publications Committee to Fred Gommo, official photographer.

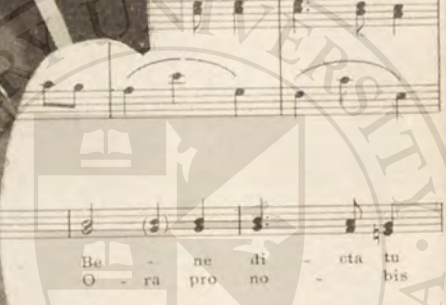
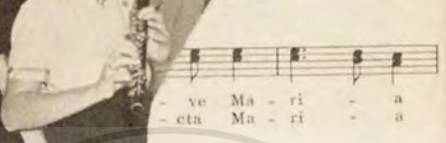
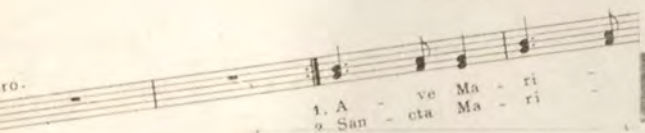
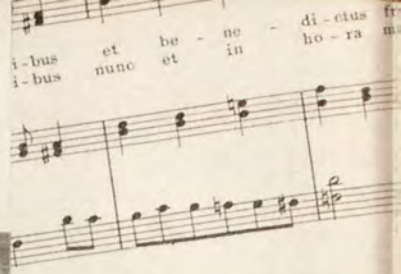


(above) ANGELICUS staff members: Patricia MacGill, Patricia Organ, Bettye Perry, Rachael Warner, Janet Athy. (right) TORCH AND SHIELD staff members: Martha Scheffer, Rose Marie Wilson, Justine Olson, Patricia MacGill, Elaine Miller.



Ave Maria

Music by Sister M. Denise, O.P.



Do-mi-nus te-cum;
Ma-ter Do-i.



Ave Maria

Music by Sister M. Denise, O.P.



1. A - ve
2. San - cta

li - e - ri - bus et be - ne
ca - to - ri - bus nunc et in

A - ve Ma - ri - a
San - cta Ma - ri - a

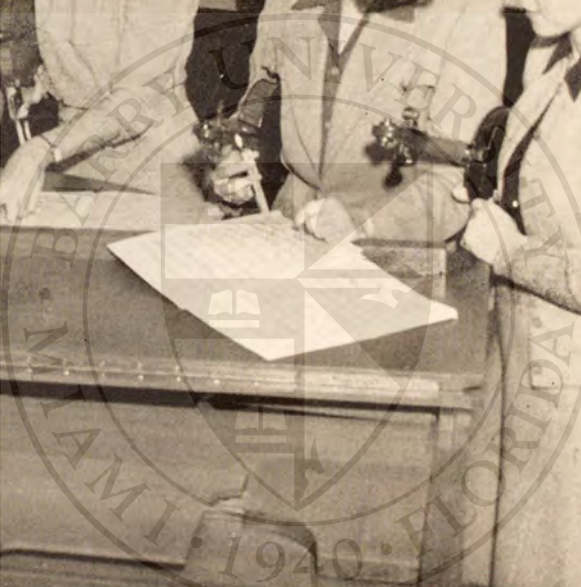
ven - tris tu - i, Je - su
no - strae. A -

Be - ne di - cta tu
O - ra pro no - bis

su - ven - tris tu
men! mor - tis no -

49873

49872





Barbara Hannon

Tara Student

... MUSICAL BARRYITES form the membership of the Tara Student Music club, also known as the Tara Singers and, upon religious occasions, as the Cor Jesu Choir . . .

... Outstanding in the memories of students and of hundreds of visitors were the two oratorios, written by Sister Mary Denise, which the choir presented during the year . . . the Christmas Oratorio . . . featuring Shirley Rees . . . Florence Hodde . . . Barbara Hannon . . . Janet Athy . . . Geraldine Kunz . . . and Mary Jane Mills . . . and the moving Oratorio of the Passion . . . with Florence Hodde as the Christus . . .

... The Choir sings the proper of the Mass each Sunday and during the year

The Christmas Oratorio



Music Club

presented musical programs on Founders' Day . . . and Pan-American Day . . .

. . . As the Tara Singers, the group sang at the Campus Queen coronation ceremonies . . . and presented the traditional St. Patrick's Day program for St. Patrick's parish, Miami Beach . . .

. . . At baccalaureate and graduation services the Choir made its last appearance of the year . . . a feature of graduation was Sister Denise's new composition, "In the Beginning Was the Word" . . .

. . . Rose Marie Wilson is president of the Music club; Janet Athy social chairman; and Grace Schaefer, secretary . . . Sister Rose Therese is director of the club and Sister Mary Denise is organist . . .



Margaret Monckton

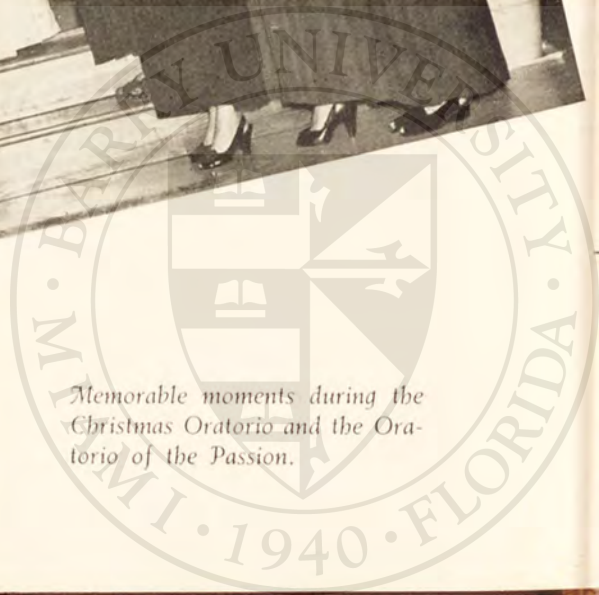


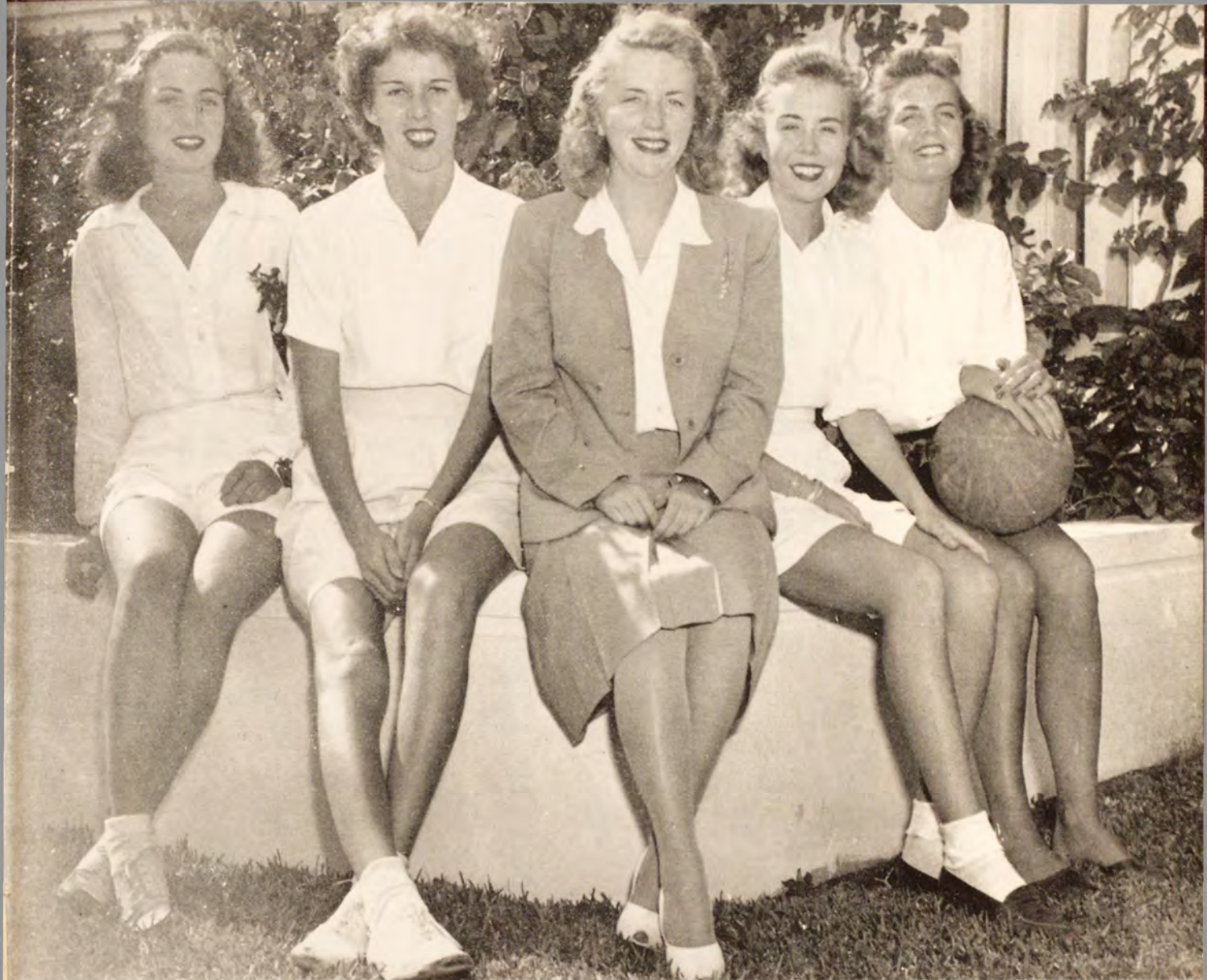
The St. Patrick's day program





Memorable moments during the Christmas Oratorio and the Oratorio of the Passion.

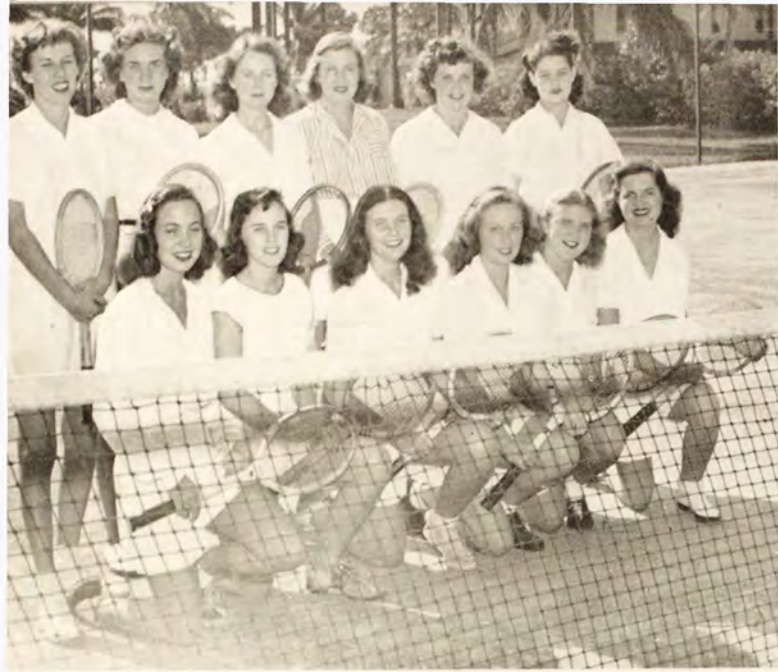




OFFICERS OF THE ATHLETIC ASSOCIATION: *Virginia Breit*, president, *Doris Hart*, vice-president, *Miss Marian Flanagan*, director of physical education, *Janith Schaefer*, secretary, and *Jeanne Lilly*, treasurer.

Athletics

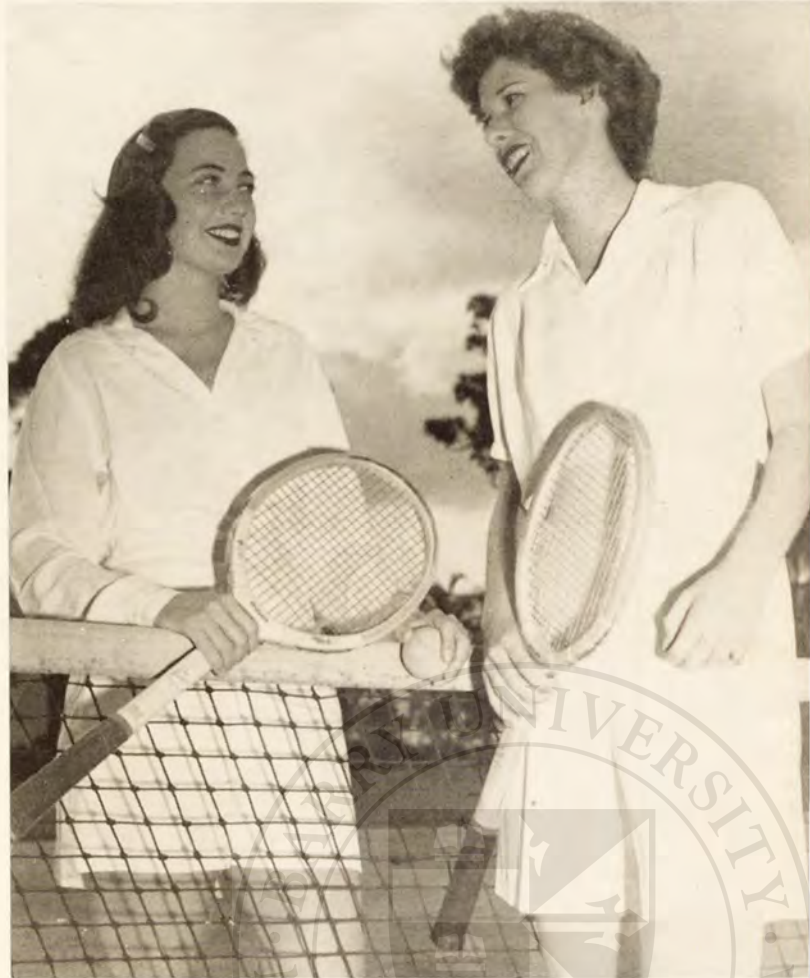




The tennis club members met twice weekly throughout the year to perfect their playing techniques under the direction of Mr. Moss, pro from Miami Beach. Students also played off-campus matches at the Bath club. Presidency of the group was shared by Doris Hart and Virginia Breit; Margaret Dunsmore was secretary-treasurer, and Barbara Streckfus was business manager.

TENNIS CLUB

Gini and Doris confer on a fine point of tennis strategy.



. . . Big event of the year for the athletic association was the water ballet presented April 4 . . . Here four mermaids get in the mood for a rhythmical dip in Penafort Pool . .



WATER BALLET

. . . Not so easy as it looks . . .
This stroked swimming was the result of hours of practice by the Barry "aquabelles" under the direction of Miss Flanagan and Jane Dexter . . .





... The formality of academic cap and gown . . . the beauty of Candle and Rose night . . . remain among the cherished memories of the seniors . . .

Barry





... "Now, that reminds me of a story."
... Highlights of the year are the
Founders' day and Baccalaureate Sun-
day breakfasts ... Will the freshmen
ever forget the thrill of Investiture? ...

Memories





Adventuring into the realm of higher mathematics at the Science Exhibit are Father Burke and Barbara Hannon . . . Able guides are Claire McCullough and Mary Maboney . . .



June Seralles chats with a distinguished visitor . . . Monsignor Fulton J. Sheen of Catholic Hour fame.





... Dances! ... dances ...
The Showboat Hop ... the
Hallowe'en Dance ... the
Christmas Formal ... and
finally, the Senior Prom,
with Prom Queen Jean
Travnikar ...











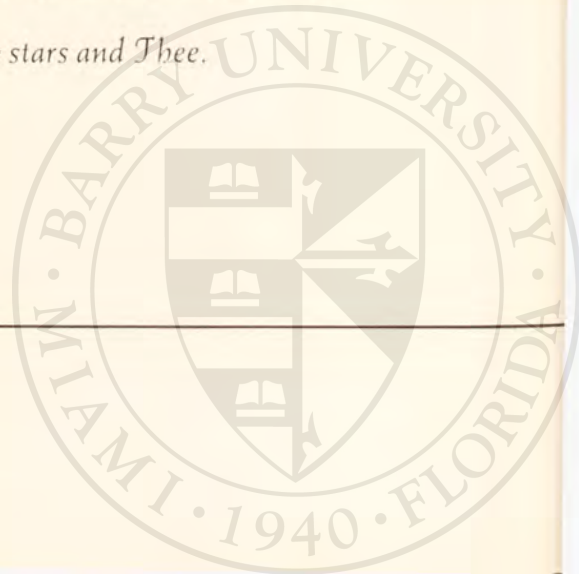
"Fare Ye Well.."

Night and the stars look down
Where Thy grace and Thy glory be;
The classes are done and the halls are
dim,
Night and the stars and Thee.

Night, and the hours go softly,
In the silence Thou watchest near;
Between our walls Thy greatness rests,
Most terrible and dear.

Night, and we rest more surely
To know, when our tasks were done,
Thy blessing was set on our striving
And our work and our prayer were one.

Night and the stars look down
Where Thy peace and Thy presence be;
The books are closed and the pens laid
by,
Night and the stars and Thee.







Advertising manager Elaine Miller and business manager Rose Marie Wilson hatching plans for bigger and better yearbooks.

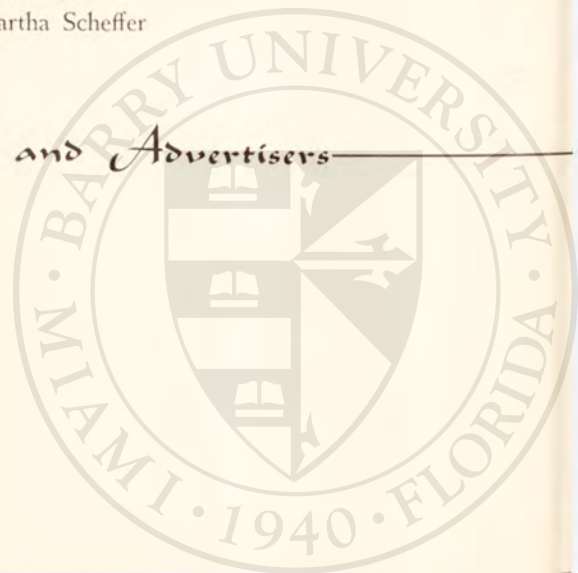
Subscription Representatives:

Ann Grimshawe	Carol Ann Brady
Claire McCullough	Patricia Fashingier
Kathleen McGoldrick	Marilyn Rees
Patricia Quinn	Christina Kelly
Mary Ann Maher	Joan Kuntz

Advertising Agents:

Mary Ann Berghoff	Eileen Meyers
Anna Kolias	Martha Scheffer

Patrons and Advertisers



Patron List

Right Reverend Monsignor William Barry

Captain and Mrs. W. J. Allen	Mr. and Mrs. P. J. Lyons
Mrs. W. S. Ankenbrock	Mr. and Mrs. P. MacGill
Henrique G. Arango	Miss Florence McCarthy
Miss Anna Arias	Miss Mary Jeanne McCullen
Barry College Alumnae Association	Mr. and Mrs. J. C. McCullough
Mr. and Mrs. C. A. Berghoff	Mrs. Catherine McGhan
Mr. Casimer Borowicz	Mr. and Mrs. P. J. McGoldrick
Dr. and Mrs. B. A. Bourne	Dr. W. A. McHugh, Jr.
Dr. and Mrs. E. C. Boyle	Miss Lorraine Miller
Mr. and Mrs. M. J. Bransfield	Miss Marjorie Moffitt
Mr. and Mrs. F. D. Breit	Miss Dorothy Motschall
Mrs. Agnes Brennan	Mr. L. E. Mudd
Mr. and Mrs. J. M. Brien	Mr. H. P. Munger
Mrs. Ethel Cain	Mr. W. W. Muszynski
Dr. and Mrs. E. P. Cobo	Mr. A. W. Neuman
Miss Frances Collier	Mr. and Mrs. T. F. O'Keefe
Mr. and Mrs. M. A. Condon	Mr. and Mrs. E. H. Omara
Mr. and Mrs. R. B. Convery	Mr. and Mrs. E. W. Oswald
Mr. C. R. Davis	Mr. Charles Park
Mr. and Mrs. F. H. Diehl	Mrs. R. S. Perry
Mr. T. W. Downey	Dr. N. C. Pintado
Mr. and Mrs. J. P. Duane	N. A. Portocarrero, M. D.
Mr. and Mrs. J. A. Dunn	Mr. and Mrs. S. S. Rees
Mr. and Mrs. J. W. Fenn	Mr. Emilio Reynes
Mr. and Mrs. A. Ficks	Mr. and Mrs. H. J. Reynolds
Mr. and Mrs. J. G. Genolio	Dr. and Mrs. J. R. Ripton
Mrs. Florence R. Gillig	Mrs. C. M. Roberts
Mr. and Mrs. C. P. Gillen	Mrs. Glenn Sanderson
Mr. and Mrs. R. J. Gits	Mr. J. P. Savage
Mr. and Mrs. G. J. Gray	Mr. and Mrs. C. Scheffer
Mr. and Mrs. L. M. Gartland	H. E. Schmitz, M. D.
Mr. R. F. Heck	Mr. and Mrs. A. J. Schorsch
Mr. and Mrs. L. J. Henkel	Mr. and Mrs. Frank Shannon
Mrs. L. R. Herschling	Mr. and Mrs. M. P. Smith
Mr. P. B. Hodde	Miss Alicia Sours
Mr. C. T. Hoffman	Donald Stannus, M. D.
Miss Audrey Hull	Mr. and Mrs. V. Streckfus
Mr. Manuel Imbert	Karl Stumpp Cactus Patio
Mrs. Anne D. Jernigan	Sunny South Paint Company
Mr. and Mrs. W. L. Jones	Mr. and Mrs. G. Travnikar
Mr. and Mrs. E. J. Kelly	Mrs. J. C. Turrentine
Mr. and Mrs. J. M. Koenig	Mrs. Vincente Vallejo
Mr. and Mrs. W. R. Kokenge	Mr. and Mrs. J. Vogt
Mr. and Mrs. R. Kuntz	Mr. and Mrs. J. F. Walton
Mrs. Charles Kunz	Mrs. S. J. Warsaw
Mr. and Mrs. J. A. Lane	Mrs. Juliette Weed
Mr. John Lomaistro	Mr. and Mrs. F. G. Weisenberger
Mr. and Mrs. J. K. Leander	Mr. and Mrs. R. G. Wilson
Mr. and Mrs. J. R. Lockwood, Jr.	Mr. J. W. Wood, Jr.
Mr. and Mrs. R. J. Loeffler	

COMPLIMENTS

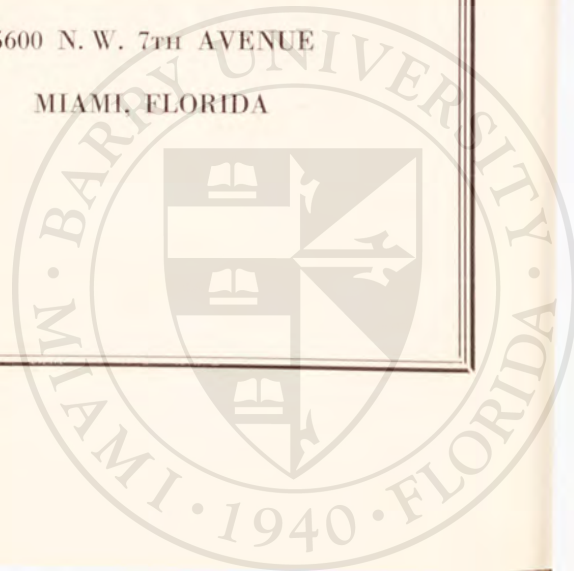
of

Brennan Company

CONTRACTORS

1690 ALTON ROAD
MIAMI BEACH, FLORIDA

5600 N. W. 7TH AVENUE
MIAMI, FLORIDA



KEEPING PACE WITH THE GROWTH OF MIAMI

December	DEPOSITS	CAPITAL AND SURPLUS	LOANS	December
1931	\$1,700,000.00	\$500,000.00	\$530,000.00	1931
1933	\$1,990,000.00	\$500,000.00	\$170,000.00	1933
1935	\$4,420,000.00	\$600,000.00	\$650,000.00	1935
1937	\$6,400,000.00	\$650,000.00	\$1,400,000.00	1937
1939	\$11,400,000.00	\$750,000	\$3,010,000.00	1939
1941	\$17,100,000.00	\$1,000,000.00	\$4,940,000.00	1941
1943	\$41,421,000.00	\$4,400,000.00	\$6,999,000.00	1943
1945	\$60,115,000.00	\$5,000,000.00	\$11,307,000.00	1945

**FLORIDA NATIONAL BANK
AND TRUST COMPANY
AT MIAMI**

ALFRED I. DUPONT BUILDING

Member Florida National Group

Member Federal Deposit Insurance Corporation

Member Federal Reserve System

Congratulations to the Class of '46

PACIFIC LUMBER & SUPPLY CO.



Compliments of

The Renuart Lumber Yards, Inc.

"Everything to Build Anything"



DRINK

Coca-Cola

TRADE MARK
REG. U.S. PAT. OFF.

The pause that refreshes

Miami Coca-Cola Bottling Company



MIAMI, FLORIDA

***Heating ★ Ventilation
Plumbing ★ Oil Burners***

MAIN OFFICE MIAMI
218 N. E. 6TH STREET
PHONES 2-3119 - 2-3110

MIAMI BEACH OFFICE
1122 16TH STREET
PHONE 5-3546

- MEATS
- PRODUCE
- GROCERIES

CARL'S

- DELICATESSEN
- BAKERY
- DRUG - SUNDRIES

The Complete Food Centers

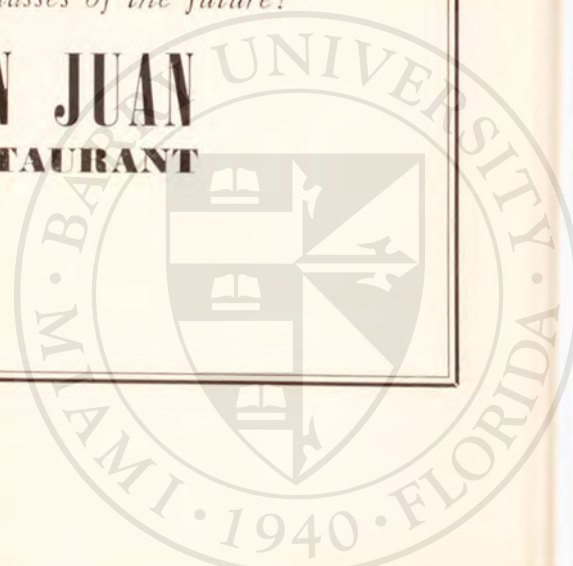
8515 BISCAYNE BOULEVARD . . . MIAMI
 1895 S.W. 8TH STREET MIAMI
 700 41ST STREET MIAMI BEACH
 1701 ALTON ROAD MIAMI BEACH

Congratulations, Class of '46!

SAN JUAN is affiliated with Walker - Skagseth Food stores. Quality Grocers for over 30 years.

We extend every best wish for your happiness and success. Your achievements will serve as an inspiration to classes of the future!

**SAN JUAN
 RESTAURANT**



COMPLIMENTS

OF

Jeanne's Studio Inn

The restaurant for your convenience

OPEN UNDER NEW MANAGEMENT

Wholesale Distribution for all

Steel - Building Products

**Ludman
Corporation**

21 N. W. 2ND STREET

Largest Distributors in the South

**"When you think of Steel - -
think of Ludman"**

COMPLIMENTS

OF

**Nathan Straus
Duparquet, Inc.**

1100 N. E. 2ND AVENUE

COMPLIMENTS

OF

**Miami Shores
Pharmacy**

PRESCRIPTIONS

9540 N. E. 2ND AVENUE

PHONE 7-1585

Biscayne

**EXTERMINATING
SERVICE Inc.**

Phone 4-6401

"Don't tolerate — Exterminate"

WEDDINGS

RECEPTIONS

Fred J. Gommo

NORTH MIAMI

Photography

PUBLICITY AND INFORMAL
PORTRAITURE

Telephone: 7-0986

Compliments

OF THE

**HARDIN OFFICE
SUPPLY CO.**



209 S. MIAMI AVENUE

Congratulations

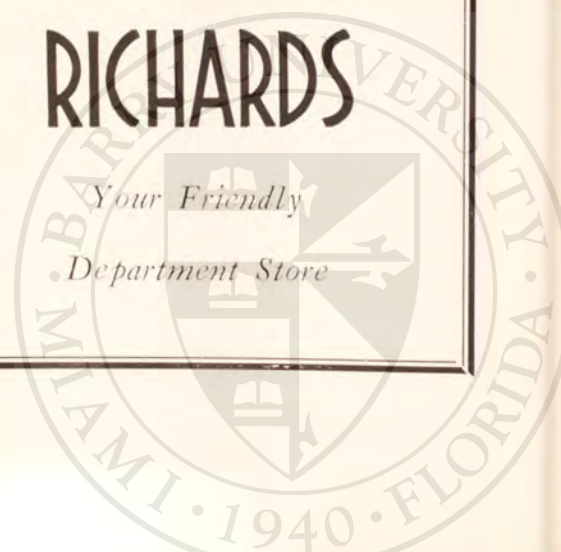
and Best Wishes

Class of '46

RICHARDS

Your Friendly

Department Store



Congratulations

to

Class of 1945-'46

**RED CROSS
DRUG
DEPARTMENT STORE**

COMPLIMENTS

OF

McArthur

Jersey Farm Dairy

169 N. E. SIXTY-SECOND STREET

PHONE 7-1667

CONGRATULATIONS

FROM

**FREDERICH'S
MARKET**

COMPLIMENTS

of

McMURRAY

PRINTERS

• • •

*"When in a hurry
call McMURRAY"*

FUEL OIL

*For Any Equipment
In Any Quantity*

**Prompt and Efficient
Metered Delivery
Service**

To

Homes, Hotels, Stores, Apartments,
Institutions and Industrial Plants.

BELCHER
OIL COMPANY

ESTABLISHED 1915

MIAMI and PORT EVERGLADES, FLORIDA

Serving South Florida for Over 30 Years

PARAMOUNT THEATRES

Extend Congratulations to

BARRY COLLEGE

on its Growth and its Outstanding

Position in the World of Education.

We Know That You Will Always

Find the Best in Entertainment at

Our New

SHORES THEATRE

. . . . Open Soon!

SPECIALIZING IN

**Miami Shores - Biscayne
Park - El Portal and
Adjacent Properties**

Invest your idle money in good Lots
It's safe and profitable

**JOHN A. MAHOOD,
Realtors**

9535 N. E. 2ND AVENUE
PHONE 7-2401

Established Here Since 1932

COMPLIMENTS

OF

**The
Walter E. Peach
Organization**

Real Estate

9500 N. W. 7TH AVENUE

**FLORIDA
DAIRIES
COMPANY**

***Homogenized
Vitamin B Milk***

2354 NORTH MIAMI AVENUE

COMPLIMENTS

OF

Columbia

BAKING COMPANY

Bakers of Southern Bread and Cake

COMPLIMENTS

OF

**THE
MAXWELL**

**Company
INC.**

HARTLEY'S

HARTLEY'S RESORT FASHIONS HARTLEY'S

Hartley's

EAST FLAGLER STREET
THRU TO S. & FIRST ST.

**MIAMI'S LARGEST
APPAREL STORE**

FOR HOME AND BUSINESS

**Miami Beach
Awning Company**

AWNINGS

1125 5TH STREET MIAMI BEACH

"Tailored Printing for 'ticular People"

Brower Press

Commercial Printing and Engraving

Ruling and Personal Stationery

COMPLIMENTS

OF

**Smith, Richardson
and Conroy, Inc.**

MIAMI WEST PALM BEACH

THE

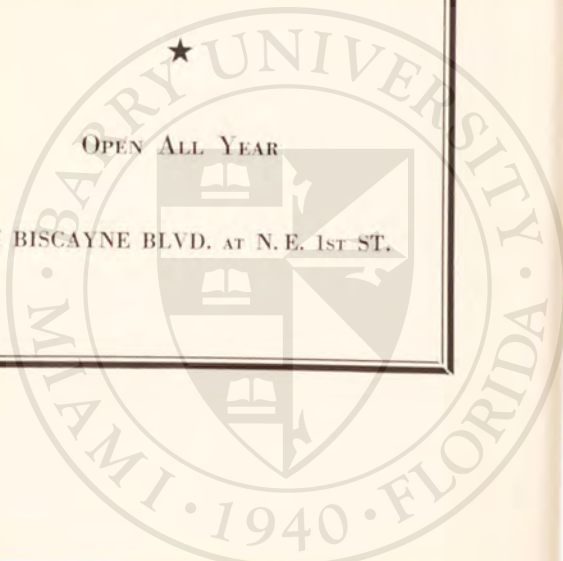
COLUMBUS



Miami's Finest Bayfront Hotel

OPEN ALL YEAR

ON BISCAYNE BLVD. AT N. E. 1ST ST.



DeLuca's Organization

Realtors

170 N. E. 2ND AVENUE

PHONE: 3-3681

COMPLIMENTS

OF

Florida Awning

4332 N. W. 7TH AVENUE

Two Sisters and a Brother

Lechich
Florists

We deliver Flowers by Wire

COMPLIMENTS

OF

Herendeen's

Furnishers of Hotels and Apartments
19 N W. Third St. Miami, Florida

COMPLIMENTS OF

MOORE
Furniture Company

Furnishings for your Home

WITHERS VAN LINES

Long Distance Furniture Movers

Long Distance Furniture Movers

1000 N. E. FIRST AVENUE

Telephone 3-2667

COMPLIMENTS

OF

Wallace, Burton & Davis

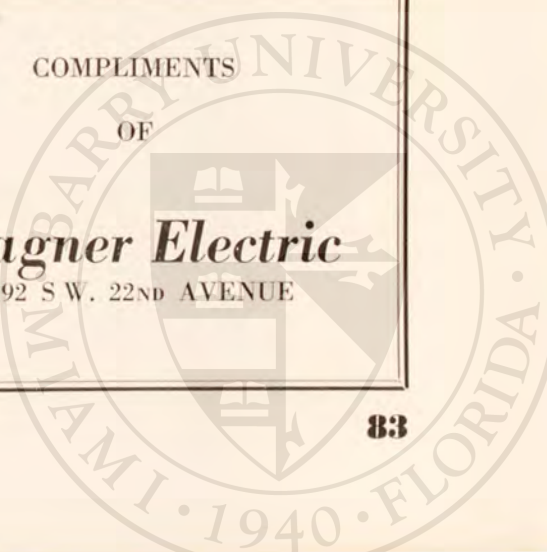
67 N. W. 10TH STREET

COMPLIMENTS

OF

Wagner Electric

2192 S W. 22ND AVENUE



BEST WISHES
TO THE
FACULTY and
STUDENTS
COMPLIMENTS
OF
CHAPLIN FLORIST

COMPLIMENTS
OF
Sutton Jewelry
Company

Miami's Oldest Jewelry
132 EAST FLAGLER STREET

PHONE 3-5331
Duval Jewelry Company
"All Over Florida"
226 EAST FLAGLER STREET
MIAMI 32, FLORIDA

Mr. Foster's Store
33 N. E. FIRST AVENUE
Office Supplies - Greeting Cards
Office Furniture - Engraving

Railey-Milam, Inc.
Hardware, Paints, Sporting Goods
House Furnishings
27 WEST FLAGLER STREET

USE
"Blu Green"
PLANT FOOD
HUGHES SEED STORE
116 SOUTH MIAMI AVE. - MIAMI, FLA.

Monsalvatge and Drane

WHOLESALE CIGARS

and

CANDY

Artist and Display Materials - Office Supplies
Printing

Seminole
Paper and Printing
Phones: 2-1110 and 3-4201

COMPLIMENTS

OF

**Florida Glass Company
Inc.**

1603 N. W. 7TH AVENUE

R. S. Evans

**World's Largest Car Dealers
The Finest Quality Automobiles**

STORES IN FLORIDA'S PRINCIPAL
CITIES

SHEET MUSIC

RECORDS

Wurlitzer Pianos

PHILPITT MUSIC STORE

MUSICAL INSTRUMENTS

RADIOS

Sterling Equipment Manufacturing
Corporation

Manufacturer

HOTEL, RESTAURANT *and*
INSTITUTION
KITCHEN EQUIPMENT

2315 NORTH MIAMI AVENUE



Phone: 2-4506
346 S. E. FIRST STREET
MIAMI, FLORIDA

PHONE: 7-9101

SUNOCO PRODUCTS

NELSON'S GARAGE

*Complete One-Stop Service
Carburetor Service*

197 N. W. 79TH STREET MIAMI, FLORIDA

***Skagseth
Stationery Co., Inc.***

53 N. E. FIRST STREET
MIAMI

1452 WASHINGTON AVENUE
MIAMI BEACH

Dade Typewriter Co.

419 NORTH MIAMI AVENUE

MIAMI, FLORIDA

It's Your Florida!



Nowhere is opportunity greater than it is in Florida which, in many ways, is in the pioneering stage . . . rich with promise as reward for hard work and earnest endeavor.

Florida's sound economy is about to gain new strength as it begins to make use of its great advantages of location, climate, transportation, markets and materials to build its Industrial Empire.

You who are ending your educational preparation for life have the opportunity to share in the industrial growth of Florida. The work may be difficult, discouragement and failure may threaten the outcome, but the goal is worthy of the fight for as Florida grows and prospers, so will you grow and prosper for It's Your Florida.



FLORIDA POWER & LIGHT COMPANY

The EYES of the WORLD are on YOU!

To you, the graduates of 1946, goes the job of straightening out a badly battered old world. We know you can do it!

JOE H. ADAMS

EL COMODORO HOTEL

33 S. W. 2ND AVENUE • MIAMI



WE FOCUS ON **Better Printing Plates**,

for

School Annuals!



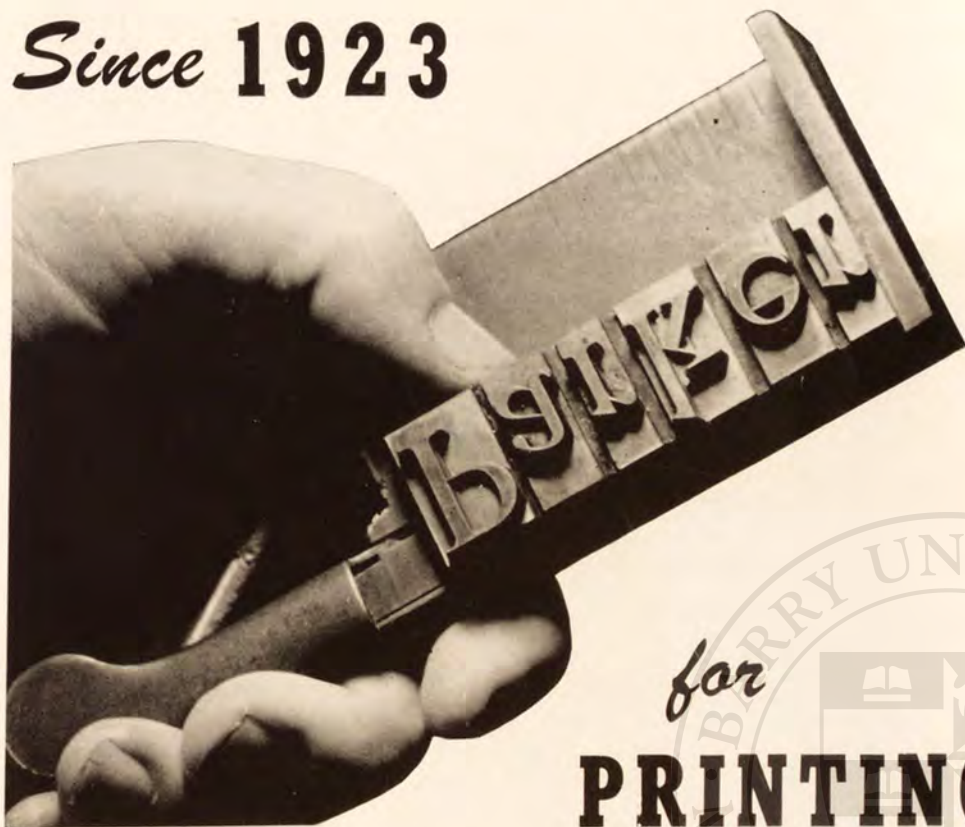
● Complete art and photo-engraving facilities are now available to schools planning new annuals. Let us tell you of the many "short cuts" in compiling your next publication. Phone us today!

PHONE
3-6651

ENGRAVERS, Inc.

68 W.
FLAGLER ST.
MIAMI

Since **1923**



for
PRINTING



